

DMM International

Y Glyn
Llanberis
Gwynedd
Wales
United Kingdom
LL55 4EL

General enquiries: +44 [0] 1286 872 222
Email: post@dmmwales.com

Disclaimer

Working at height, rock climbing, mountaineering and related activities are inherently dangerous. It is the responsibility of any person using this equipment to learn and practice the proper techniques for use of the equipment for its designated purposes safely and to foresee and take appropriate action in situations where rescue may be required. Even the correct use of equipment and techniques may result in fatal consequences. Medical conditions can affect the safety of the equipment user in normal and emergency use. Any person using this equipment assumes all risks and full responsibility for all damages or injury which may result from the use of it. There is no substitute for instruction by a trained and competent person.

DMM makes every effort to ensure the information in this brochure is correct and up to date. However we reserve the right to change product specification when or if deemed necessary. DMM International cannot be held responsible for any inaccuracies or omissions. If in doubt, please ask.

dmmwales.com



MADE IN WALES

DMM has proudly manufactured high quality climbing hardware in North Wales since 1981. Over that time, we've established a reputation for innovation and high standards of quality control.

Key to that reputation is the fact that all safety critical processes from design through to manufacture, assembly and testing, are carried out at our site in Llanberis.

We greatly value the close relationship we've built-up with grass roots activists around the world in providing valuable feedback for product development.

In this workbook, you'll find details of our 2020 climbing range with highlighted new additions and updated products. We're particularly excited to be adding Halfnuts to the line-up and confident they'll become a must-have addition to any trad rack. These single wire nuts (size 1-7) are ideal for shallow placements and 38% lighter than the equivalent size Walnut set. Also, new to the range we have the Shadow HMS, our new general purpose rigging carabiner and the Short Haul, a compact version of the popular Flight bag.

climb now work later

Team DMM

Contents

Cams	04
Nuts	06
Carabiners	10
Quickdraws	14
Slings	18
Locking Carabiners	22
Belay & Descent	26
Harnesses	28
Winter Equipment	32
Bags & Accessories	36
Clothing	42
Walls & Centres	46

› Gilly McArthur
Nacissism (5.10b),
Fosters Falls, Tennessee, USA.
📷 Ray Wood



Cams

› Dragonfly Micro Cams

Versatile micro cam protection for narrow cracks, pin scars and small pockets. The size 1 Dragonfly is our smallest certified climbing cam. The range covers placements from 7.8 to 28.3mm and they all feature an extendable sling and TripleGrip lobes.



› Dragon Cams

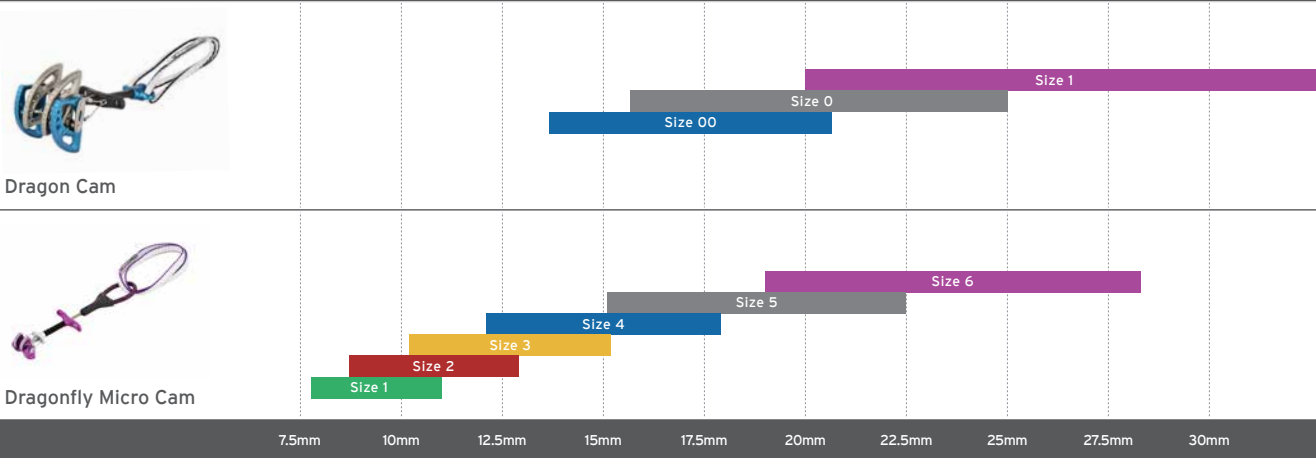
A state of the art cam. The single stem, double axle design with a 13.75° camming angle and TripleGrip lobes make the most of every placement. The range covers placements from 14mm-195mm and they all feature an extendable sling; saving quickdraws.



DESCRIPTION	PRODUCT CODE	COLOUR	CAM RANGE	WEIGHT	STRENGTH	PASSIVE	CONFORMANCE
Dragonfly Micro Cam 1	A7551A	Green	7.8 - 11mm	55g	6kN	n/a	EN12276:2013
Dragonfly Micro Cam 2	A7552A	Red	8.7 - 12.9mm	56g	6kN	n/a	
Dragonfly Micro Cam 3	A7553A	Gold	10.2 - 15.2mm	65g	8kN	n/a	
Dragonfly Micro Cam 4	A7554A	Blue	12.1 - 17.9mm	67g	8kN	n/a	
Dragonfly Micro Cam 5	A7555A	Silver	15.1 - 22.5mm	70g	9kN	n/a	
Dragonfly Micro Cam 6	A7556A	Purple	19 - 28.3mm	73g	9kN	n/a	

DESCRIPTION	PRODUCT CODE	COLOUR	CAM RANGE	WEIGHT	STRENGTH	PASSIVE	CONFORMANCE
Dragon Cam 00	A73500A	Blue	14 - 21mm	75g	10kN	9kN	EN12276:2013
Dragon Cam 0	A7350A	Silver	16-25mm	85g	14kN	12kN	
Dragon Cam 1	A7351A	Purple	20-33mm	103g	14kN	14kN	
Dragon Cam 2	A7352A	Green	24-41mm	117g	14kN	14kN	
Dragon Cam 3	A7353A	Red	29-50mm	128g	14kN	14kN	
Dragon Cam 4	A7354A	Gold	38-64mm	154g	14kN	14kN	
Dragon Cam 5	A7355A	Blue	50-85mm	208g	14kN	14kN	
Dragon Cam 6	A7356A	Silver	68-114mm	299g	14kN	14kN	
Dragon Cam 7	A7357A	Purple	88-149mm	362g	14kN	14kN	
Dragon Cam 8	A7358A	Green	116-195mm	515g	14kN	14kN	
Dragon Cam Set 0-5	A7350/5A	Assorted	16-85mm	870g	14kN	12-14kN	
Dragon Cam Set 00-1	A73500/1A	Assorted	14-33mm	263g	10-14kN	9-14kN	
Dragon Cam Set 2-4	A7352/4A	Assorted	24-64mm	399g	14kN	14kN	

› Cam range overlap table



› Emma Twyford

Once Upon a Time in the Southwest (E9 6c),
Dyer's Lookout, Devon, England.

Ray Wood

Nuts

Nuts

New

› Halfnuts

Single wire lightweight nuts that increase your protection options. Halfnuts excel in shallow placements, pin scars and situations where every gram counts.

- 38% lighter than equivalent size Walnut 1-7 set.
- Reduced width gives more stability in shallow placements.
- Unique shape creates additional placement opportunities.
- Same reliable profile as classic Walnuts.



› Walnuts

Walnuts are the backbone of a trad climbing rack. The tapered faces and sides provide secure placement options. Scoops aid stability and reduce weight.



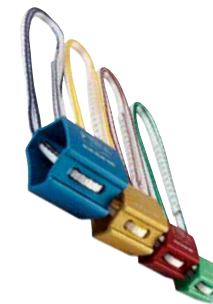
› HB Alloy Offsets

Versatile nuts with an offset taper that allows them to protect flared and irregular cracks.



› Torque Nuts

Lightweight protection with an extendable Dynatec sling to help reduce rope drag. The camming action of the nut is ideal for protecting wider and parallel sided cracks.



› Wired Torque Nuts

Lightweight protection for wider and parallel sided cracks. Like our Torque Nuts they can be used in several orientations. Easier to control placing above your head. Great in winter.



› Micro Walnuts

Straight sided micro-nuts that offer security in small placements.



› Peenuts

Offset micro-nuts that effectively protect small flared cracks and peg scars.



› IMP Brass Nuts

Straight sided brass micro-nuts that protect small cracks.



› HB Brass Offsets

Brass micro-nuts with an offset taper suitable for protecting small flared cracks.



› Ben Bransby
Witch Hunt (E4 6b),
Huntsman's Leap, Pembroke, Wales.
📷 Ray Wood

DESCRIPTION	PRODUCT CODE	COLOUR	DIMENSIONS	WEIGHT	STRENGTH	CONFORMANCE
Halfnut 1	A1671A	Purple	6.7/ 7.2mm	10g	4kN	EN12270:2013
Halfnut 2	A1672A	Green	8.2/ 7.9mm	10g	4kN	EN12270:2013
Halfnut 3	A1673A	Silver	9.4/ 8.9mm	18g	6 kN	EN12270:2013
Halfnut 4	A1674A	Gold	11.0/ 9.9mm	19g	6 kN	EN12270:2013
Halfnut 5	A1675A	Blue	13.2/ 11.3mm	21g	6 kN	EN12270:2013
Halfnut 6	A1676A	Red	15.6/ 12.8mm	24g	6 kN	EN12270:2013
Halfnut 7	A1677A	Grey	18.9/14.3mm	25g	6kN	EN12270:2013
Halfnut Set 1-7	A1671/77A	Assorted	6.7-18.9mm	127g	4-6kN	EN12270:2013

DESCRIPTION	PRODUCT CODE	COLOUR	DIMENSIONS	WEIGHT	STRENGTH	CONFORMANCE
Wallnut 1	A1611A	Purple	6.7 / 14.3mm	15g	7kN	EN12270:2013, UIAA 124
Wallnut 2	A1612A	Green	8.1 / 15.8mm	26g	9kN	EN12270:2013, UIAA 124
Wallnut 3	A1613A	Silver	9.4 / 16.5mm	28g	11kN	EN12270:2013, UIAA 124
Wallnut 4	A1614A	Gold	11.0 / 17.6mm	30g	12kN	EN12270:2013, UIAA 124
Wallnut 5	A1615A	Blue	13.2 / 19.4mm	32g	12kN	EN12270:2013, UIAA 124
Wallnut 6	A1616A	Red	15.6 / 22.6mm	39g	12kN	EN12270:2013, UIAA 124
Wallnut 7	A1617A	Grey	18.9 / 25.8mm	40g	12kN	EN12270:2013, UIAA 124
Wallnut 8	A1618A	Turquoise	22.3 / 29.0mm	45g	12kN	EN12270:2013, UIAA 124
Wallnut 9	A1619A	Gold	25.2 / 32.1mm	50g	12kN	EN12270:2013, UIAA 124
Wallnut 10	A1620A	Silver	28.8 / 32.6mm	56g	12kN	EN12270:2013, UIAA 124
Wallnut 11	A1621A	Green	33.1 / 37.4mm	68g	12kN	EN12270:2013, UIAA 124
Wallnut Set 1-11	A1611/21A	Assorted	6.7-37.4mm	429g	7-12kN	EN12270:2013, UIAA 124
Wallnut Set 1-6	A1611/16A	Assorted	6.7-22.6mm	170g	7-12kN	EN12270:2013, UIAA 124
Wallnut Set 7-11	A1617/21A	Assorted	18.9-37.4mm	259g	12kN	EN12270:2013, UIAA 124

DESCRIPTION	PRODUCT CODE	COLOUR	DIMENSIONS	WEIGHT	STRENGTH	CONFORMANCE
HB Alloy Offset 7	A1817A	Gold	12.0 / 15.1mm	27g	12kN	EN12270:2013, UIAA 124
HB Alloy Offset 8	A1818A	Blue	13.5 / 17.9mm	30g	12kN	EN12270:2013, UIAA 124
HB Alloy Offset 9	A1819A	Red	17.1 / 21.4mm	37g	12kN	EN12270:2013, UIAA 124
HB Alloy Offset 10	A1820A	Grey	19.4 / 25.1mm	45g	12kN	EN12270:2013, UIAA 124
HB Alloy Offset 11	A1821A	Turquoise	23.2 / 30mm	56g	12kN	EN12270:2013, UIAA 124
HB Alloy Offset Set 7-11	A1817/21A	Assorted	12.0-30mm	195	12kN	EN12270:2013, UIAA 124

DESCRIPTION	PRODUCT CODE	COLOUR	DIMENSIONS	WEIGHT	STRENGTH	CONFORMANCE
Torque Nut 1	A1741	Green	31 / 41mm	54g	14kN	EN12270:2013, UIAA 124
Torque Nut 2	A1742	Red	36 / 49mm	70g	14kN	EN12270:2013, UIAA 124
Torque Nut 3	A1743	Gold	44 / 59mm	104g	14kN	EN12270:2013, UIAA 124
Torque Nut 4	A1744	Blue	54 / 71mm	146g	14kN	EN12270:2013, UIAA 124
Torque Nut Set 1-4	A1741/44	Assorted	31-71mm	374g	14kN	EN12270:2013, UIAA 124

DESCRIPTION	PRODUCT CODE	COLOUR	DIMENSIONS	WEIGHT	STRENGTH	CONFORMANCE
Wired Torque Nut 1	A1751	Green	31 / 41mm	69g	12kN	EN12270:2013
Wired Torque Nut 2	A1752	Red	36 / 49mm	86g	12kN	EN12270:2013
Wired Torque Nut 3	A1753	Gold	44 / 59mm	114g	12kN	EN12270:2013
Wired Torque Nut 4	A1754	Blue	54 / 71mm	161g	12kN	EN12270:2013
Wired Torque Nut Set 1-4	A1751/54	Assorted	31-71mm	430g	12kN	EN12270:2013

DESCRIPTION	PRODUCT CODE	COLOUR	DIMENSIONS	WEIGHT	STRENGTH	CONFORMANCE
Micro Wallnut 00	A1600A	Gold	4.0 / 9.7mm	5g	2kN	EN12270:2013, UIAA 124
Micro Wallnut 0	A1610A	Blue	4.6 / 10.8mm	6g	2kN	EN12270:2013, UIAA 124
Micro Wallnut 0.5	A1658A	Red	5.1 / 11.7mm	9g	4kN	EN12270:2013, UIAA 124
Micro Wallnut 0.75	A1659A	Grey	5.9 / 12.6mm	10g	6kN	EN12270:2013, UIAA 124
Micro Wallnut Set 00-0.75	A1600/59A	Assorted	4.0-12.6mm	30g	2-6kN	EN12270:2013, UIAA 124

DESCRIPTION	PRODUCT CODE	COLOUR	DIMENSIONS	WEIGHT	STRENGTH	CONFORMANCE
Peenut 1	A1511A	Red	6.5 / 11.5mm	8g	4kN	EN12270:2013, UIAA 124
Peenut 2	A1512A	Grey	6.8 / 12.1mm	9g	5kN	EN12270:2013, UIAA 124
Peenut 3	A1513A	Purple	7.8 / 12.7mm	10g	5kN	EN12270:2013, UIAA 124
Peenut 4	A1514A	Green	8.9 / 13.2mm	16g	8kN	EN12270:2013, UIAA 124
Peenut 5	A1515A	Silver	9.2 / 13.9mm	18g	8kN	EN12270:2013, UIAA 124
Peenut Set 1-5	A1511/15A	Assorted	6.5-13.9mm	61g	4-8kN	EN12270:2013, UIAA 124

DESCRIPTION	PRODUCT CODE	COLOUR	DIMENSIONS	WEIGHT	STRENGTH	CONFORMANCE
IMP Brass Nut 1	A1721	Blue	4.0 / 5.6mm	4g	4kN	EN12270:2013, UIAA 124
IMP Brass Nut 2	A1722	Red	4.8 / 6.4mm	8g	5kN	EN12270:2013, UIAA 124
IMP Brass Nut 3	A1723	Silver	6.4 / 7.9mm	10g	5kN	EN12270:2013, UIAA 124
IMP Brass Nut 4	A1724	Purple	7.9 / 9.5mm	13g	7kN	EN12270:2013, UIAA 124
IMP Brass Nut 5	A1725	Green	9.5 / 11.7mm	16g	7kN	EN12270:2013, UIAA 124
IMP Brass Nut Set 1-5	A1721/25	Assorted	4-11.7mm	51g	4-7kN	EN12270:2013, UIAA 124

DESCRIPTION	PRODUCT CODE	COLOUR	DIMENSIONS	WEIGHT	STRENGTH	CONFORMANCE
HB Brass Offset 0	A1700	Gold	3.7 / 5.5mm	4g	2kN	EN12270:2013, UIAA 124
HB Brass Offset 1	A1701	Blue	4.3 / 6.5mm	7g	4kN	EN12270:2013, UIAA 124
HB Brass Offset 2	A1702	Red	5.6 / 7.5mm	9g	5kN	EN12270:2013, UIAA 124
HB Brass Offset 3	A1703	Grey	6.0 / 8.5mm	10g	5kN	EN12270:2013, UIAA 124
HB Brass Offset 4	A1704	Purple	7.5 / 10.2mm	14g	7kn	EN12270:2013, UIAA 124
HB Brass Offset 5	A1705	Green	8.6 / 11.7mm	17g	7kn	EN12270:2013, UIAA 124
HB Brass Offset 6	A1706	Silver	9.8 / 13.9mm	24g	10kN	EN12270:2013, UIAA 124
HB Brass Offset Set 0-6	A1700/06	Assorted	3.7-13.9mm	85g	2-10kN	EN12270:2013, UIAA 124

DESCRIPTION	PRODUCT CODE	COLOUR	DIMENSIONS	WEIGHT	STRENGTH	CONFORMANCE
Wallnut 1-11, HB Alloy Offset 7-11	NUTSET1	Assorted	6.7-37.4mm	624g	7-12kN	EN12270:2013
Wallnut 1-11, Torque 1-4	NUTSET2	Assorted	6.7-71mm	803g	7-14kN	EN12270:2013
Wallnut 1-11, HB Alloy Offset 7-11, Torque 1-4	NUTSET3	Assorted	6.7-71mm	998g	7-14kN	EN12270:2013



› Nutbuster

An essential tool for retrieving stubborn rock climbing protection.



› Bandolier

An adjustable bandolier that gives extra racking space.

DESCRIPTION	PRODUCT CODE	COLOUR	DIMENSION	WEIGHT	STRENGTH	CONFORMANCE
Nutbuster	C1251	Silver	-	57g	N/A	N/A
Nutbuster Rubber Handle	C1252-01	Assorted	-	-	N/A	N/A

DESCRIPTION	PRODUCT CODE	SIZE	COLOUR	WEIGHT
Bandolier	Bandolier	One size	Grey/Red	135g

Carabiners

Carabiners

› Alpha Trad

An ergonomic full size wire gate carabiner with a clean nose and wide gate opening for easy clipping.

MAJOR AXIS: 24kN
WEIGHT: 35g



› Spectre

A classic all-round carabiner suitable for trad, sport and winter climbing.

MAJOR AXIS: 24kN
WEIGHT: 33g



› Alpha Sport Straight

An ergonomic sport climbing carabiner that gives confident handling, easy clipping, and durability for working routes.

MAJOR AXIS: 24kN
WEIGHT: 46g



› Shadow Straight

A lightweight sport carabiner that is still tough enough to withstand working routes. Also ideal for climbers who occasionally trad climb.

MAJOR AXIS: 24kN
WEIGHT: 42g



› PerfectO Straight

A compact, true oval carabiner that maintains ease of use and is suitable for racking gear.

MAJOR AXIS: 24kN
WEIGHT: 50g



› Chimera

A lightweight clean nose carabiner that strikes the balance between weight, usability, and function.

MAJOR AXIS: 23kN
WEIGHT: 30g



› Phantom

Weighing just 28g, the Phantom is the ultimate lightweight carabiner.

MAJOR AXIS: 23kN
WEIGHT: 28g



› Alpha Sport Bent

The ergonomic Alpha shape with a hot-forged, curved gate for smooth clipping on the rope end of a sport quickdraw.

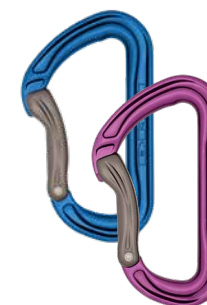
MAJOR AXIS: 24kN
WEIGHT: 47g



› Shadow Bent

A lightweight and clean nose sport carabiner for the rope clipping end of a quickdraw.

MAJOR AXIS: 24kN
WEIGHT: 43g



› Revolver

The innovative combination of a pulley wheel in a carabiner for reducing rope drag. It can also be used in an improvised hauling system.

MAJOR AXIS: 24kN
WEIGHT: 51g



› Nick Bullock
first ascent of *Pushing for Rail* (E8 6b),
Craig Dorys, Llyn Peninsula, Wales.
📷 Ray Wood



› XSRE

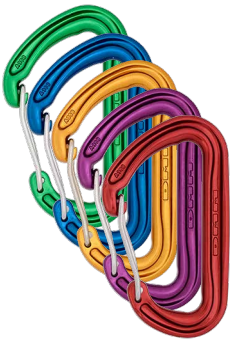
A fully featured miniature carabiner that can be used for any non-safety critical use that comes to mind.

MAJOR AXIS: 4kN
WEIGHT: 8g
NON-PPE



› Chimera Colour Pack

Pack of five colour Chimera carabiners.



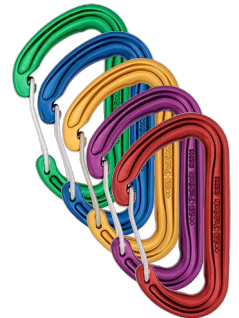
› Spectre Colour Pack

Pack of five colour Spectre carabiners.



› Alpha Trad Colour Pack

Pack of five colour Alpha Trad carabiners.



› Phantom Colour Pack

Pack of five colour Phantom carabiners.



› PerfectO Rack Pack

Pack of four colour PerfectO carabiners.

DESCRIPTION	PRODUCT CODE	COLOUR	DIMENSIONS	WEIGHT	MBS (MAJOR AXIS)	MBS (MINOR AXIS)	MBS (GATE OPEN)	GATE OPENING	CONFORMANCE
Alpha Trad	A508BL	Blue	59 x 99mm	35g	24kN	7kN	9kN	25mm	EN12275:2013 B, UIAA121:2009
Alpha Trad	A508GL	Gold	59 x 99mm	35g	24kN	7kN	9kN	25mm	EN12275:2013 B, UIAA121:2009
Alpha Trad	A508GR	Green	59 x 99mm	35g	24kN	7kN	9kN	25mm	EN12275:2013 B, UIAA121:2009
Alpha Trad	A508PR	Purple	59 x 99mm	35g	24kN	7kN	9kN	25mm	EN12275:2013 B, UIAA121:2009
Alpha Trad	A508RD	Red	59 x 99mm	35g	24kN	7kN	9kN	25mm	EN12275:2013 B, UIAA121:2009
Alpha Trad	A508	Silver	59 x 99mm	35g	24kN	7kN	9kN	25mm	EN12275:2013 B, UIAA121:2009
Alpha Trad	A508BLT	Titanium	59 x 99mm	35g	24kN	7kN	9kN	25mm	EN12275:2013 B, UIAA121:2009
Alpha Trad Colour 5 Pack	A508-P5	Assorted	59 x 99mm	175g	24kN	7kN	9kN	25mm	EN12275:2013 B, UIAA121:2009

DESCRIPTION	PRODUCT CODE	COLOUR	DIMENSIONS	WEIGHT	MBS (MAJOR AXIS)	MBS (MINOR AXIS)	MBS (GATE OPEN)	GATE OPENING	CONFORMANCE
Chimera	A398BL	Blue	53 x 90mm	30g	23kN	7kN	9kN	21mm	EN12275:2013 B
Chimera	A398GD	Gold	53 x 90mm	30g	23kN	7kN	9kN	21mm	EN12275:2013 B
Chimera	A398GR	Green	53 x 90mm	30g	23kN	7kN	9kN	21mm	EN12275:2013 B
Chimera	A398LG	Lime	53 x 90mm	30g	23kN	7kN	9kN	21mm	EN12275:2013 B
Chimera	A398PR	Purple	53 x 90mm	30g	23kN	7kN	9kN	21mm	EN12275:2013 B
Chimera	A398RD	Red	53 x 90mm	30g	23kN	7kN	9kN	21mm	EN12275:2013 B
Chimera	A398	Silver	53 x 90mm	30g	23kN	7kN	9kN	21mm	EN12275:2013 B
Chimera	A398BLT	Titanium	53 x 90mm	30g	23kN	7kN	9kN	21mm	EN12275:2013 B
Chimera Colour 5 Pack	A398-P5	Assorted	53 x 90mm	150g	23kN	7kN	9kN	21mm	EN12275:2013 B

DESCRIPTION	PRODUCT CODE	COLOUR	DIMENSIONS	WEIGHT	MBS (MAJOR AXIS)	MBS (MINOR AXIS)	MBS (GATE OPEN)	GATE OPENING	CONFORMANCE
Spectre	A358BL	Blue	56 x 97mm	33g	24kN	8kN	9kN	23mm	EN12275:2013 B, UIAA121:2009
Spectre	A358GL	Gold	56 x 97mm	33g	24kN	8kN	9kN	23mm	EN12275:2013 B, UIAA121:2009
Spectre	A358GR	Green	56 x 97mm	33g	24kN	8kN	9kN	23mm	EN12275:2013 B, UIAA121:2009
Spectre	A358PR	Purple	56 x 97mm	33g	24kN	8kN	9kN	23mm	EN12275:2013 B, UIAA121:2009
Spectre	A358RD	Red	56 x 97mm	33g	24kN	8kN	9kN	23mm	EN12275:2013 B, UIAA121:2009
Spectre	A358BLT	Titanium	56 x 97mm	33g	24kN	8kN	9kN	23mm	EN12275:2013 B, UIAA121:2009
Spectre 5 Pack	A358SI-P5	Silver	56 x 97mm	165g	24kN	8kN	9kN	23mm	EN12275:2013 B, UIAA121:2009
Spectre	A358	Silver	56 x 97mm	33g	24kN	8kN	9kN	23mm	EN12275:2013 B, UIAA121:2009
Spectre Colour 5 Pack	A358-P5	Assorted	56 x 97mm	165g	24kN	8kN	9kN	23mm	EN12275:2013 B, UIAA121:2009

DESCRIPTION	PRODUCT CODE	COLOUR	DIMENSIONS	WEIGHT	MBS (MAJOR AXIS)	MBS (MINOR AXIS)	MBS (GATE OPEN)	GATE OPENING	CONFORMANCE
Phantom	A318BL	Blue	52 x 89mm	28g	23kN	7kN	9kN	21mm	EN12275:2013 B, UIAA121:2009 Class B
Phantom	A318GL	Gold	52 x 89mm	28g	23kN	7kN	9kN	21mm	EN12275:2013 B, UIAA121:2009 Class B
Phantom	A318GR	Green	52 x 89mm	28g	23kN	7kN	9kN	21mm	EN12275:2013 B, UIAA121:2009 Class B
Phantom	A318OR	Orange	52 x 99mm	28g	23kN	7kN	9kN	21mm	EN12275:2013 B, UIAA121:2009 Class B
Phantom	A318PR	Purple	52 x 89mm	28g	23kN	7kN	9kN	21mm	EN12275:2013 B, UIAA121:2009 Class B
Phantom	A318RD	Red	52 x 89mm	28g	23kN	7kN	9kN	21mm	EN12275:2013 B, UIAA121:2009 Class B
Phantom	A318	Silver	52 x 89mm	28g	23kN	7kN	9kN	21mm	EN12275:2013 B, UIAA121:2009 Class B
Phantom	A318BLT	Titanium	52 x 89mm	28g	23kN	7kN	9kN	21mm	EN12275:2013 B, UIAA121:2009 Class B
Phantom Colour 5 Pack	A318-P5	Assorted	53 x 89mm	140g	23kN	7kN	9kN	21mm	EN12275:2013 B, UIAA121:2009 Class B

DESCRIPTION	PRODUCT CODE	COLOUR	DIMENSIONS	WEIGHT	MBS (MAJOR AXIS)	MBS (MINOR AXIS)	MBS (GATE OPEN)	GATE OPENING	CONFORMANCE
Alpha Sport Straight Gate	A521LG	Titanium/Lime	61 x 102mm	46g	24kN	8kN	9kN	22mm	EN12275:2013 B, UIAA105:2008
Alpha Sport Straight Gate	A521RD	Titanium/Red	61 x 102mm	46g	24kN	8kN	9kN	22mm	EN12275:2013 B, UIAA105:2009
Alpha Sport Bent Gate	A526LG	Lime/Titanium	61 x 102mm	47g	24kN	8kN	9kN	25mm	EN12275:2013 B, UIAA121 Class B
Alpha Sport Bent Gate	A526RD	Red/Titanium	61 x 102mm	47g	24kN	8kN	9kN	25mm	EN12275:2013 B, UIAA121 Class B

DESCRIPTION	PRODUCT CODE	COLOUR	DIMENSIONS	WEIGHT	MBS (MAJOR AXIS)	MBS (MINOR AXIS)	MBS (GATE OPEN)	GATE OPENING	CONFORMANCE
Shadow Straight Gate	A301BL	Titanium/Blue	58 x 102mm	42g	24kN	9kN	10kN	20mm	EN12275:2013 B, UIAA121:2009 Class B
Shadow Straight Gate 5 Pack	A301BL-P5	Titanium/Blue	58 x 102mm	210g	24kN	9kN	10kN	20mm	EN12275:2013 B, UIAA121:2009 Class B
Shadow Straight Gate	A301P	Titanium/ Purple	58 x 102mm	42g	24kN	9kN	10kN	20mm	EN12275:2013 B, UIAA121:2009 Class B
Shadow Straight Gate 5 Pack	A301P-P5	Titanium/ Purple	58 x 102mm	210g	24kN	9kN	10kN	20mm	EN12275:2013 B, UIAA121:2009 Class B
Shadow Bent Gate	A306BL	Blue/Titanium	58 x 102mm	43g	24kN	9kN	10kN	25mm	EN12275:2013 B, UIAA121:2009 Class B
Shadow Bent Gate 5 Pack	A306BL-P5	Blue/Titanium	58 x 102mm	215g	24kN	9kN	10kN	25mm	EN12275:2013 B, UIAA121:2009 Class B
Shadow Bent Gate	A306P	Purple/ Titanium	58 x 102mm	43g	24kN	9kN	10kN	25mm	EN12275:2013 B, UIAA121:2009 Class B
Shadow Bent Gate 5 Pack	A306P-P5	Purple/ Titanium	58 x 102mm	215g	24kN	9kN	10kN	25mm	EN12275:2013 B, UIAA121:2009 Class B

DESCRIPTION	PRODUCT CODE	COLOUR	DIMENSIONS	WEIGHT	MBS (MAJOR AXIS)	MBS (MINOR AXIS)	MBS (GATE OPEN)	GATE OPENING	CONFORMANCE
PerfectO	A591	Titanium/Lime	56 x 95mm	50g	24kN	7kN	7kN	19mm	EN12275:2013 B
PerfectO	A591BL	Blue/Titanium	56 x 95mm	50g	24kN	7kN	7kN	19mm	EN12275:2013 B
PerfectO	A591GR	Green/ Titanium	56 x 95mm	50g	24kN	7kN	7kN	19mm	EN12275:2013 B
PerfectO	A591OR	Orange/ Titanium	56 x 95mm	50g	24kN	7kN	7kN	19mm	EN12275:2013 B
PerfectO	A591RD	Red/Titanium	56 x 95mm	50g	24kN	7kN	7kN	19mm	EN12275:2013 B
PerfectO Rack 4 Pack	A591-P4	Green/Blue/ Red/Orange	56 x 95mm	200g	24kN	7kN	7kN	19mm	EN12275:2013 B

DESCRIPTION	PRODUCT CODE	COLOUR	DIMENSIONS	WEIGHT	MBS (MAJOR AXIS)	MBS (MINOR AXIS)	MBS (GATE OPEN)	GATE OPENING	CONFORMANCE
Revolver	A238	Titanium	59 x 103mm	51g	24kN	7kN	9kN	24mm	EN12275:2013 B, UIAA121:2009 Class B

DESCRIPTION	PRODUCT CODE	COLOUR	DIMENSIONS	WEIGHT	MBS (MAJOR AXIS)	MBS (MINOR AXIS)	MBS (GATE OPEN)	GATE OPENING	CONFORMANCE
XSRE	A531BLK	Black	32 x 57mm	8g	4kN	-	-	13mm	Not PPE
XSRE	A531BL	Blue	32 x 57mm	8g	4kN	-	-	13mm	Not PPE
XSRE	A531GD	Gold	32 x 57mm	8g	4kN	-	-	13mm	Not PPE
XSRE	A531GR	Green	32 x 57mm	8g	4kN	-	-	13mm	Not PPE
XSRE	A531PR	Purple	32 x 57mm	8g	4kN	-	-	13mm	Not PPE
XSRE	A531RD	Red	32 x 57mm	8g	4kN	-	-	13mm	Not PPE
XSRE	A531TQ	Turquoise	32 x 57mm	8g	4kN	-	-	13mm	Not PPE

Quickdraws

Quickdraws

› Alpha Trad

An ergonomic full size wire gate quickdraw with a clean nose and wide gate opening for easy clipping.



11mm Dynatec
12cm, 18cm, 25cm

› Chimera

A lightweight clean nose quickdraw that strikes the balance between weight, usability, and functionality. Also available on 60cm sling as an alpine quickdraw.



11mm Dynatec
12cm, 18cm, 25cm, 60cm

› Spectre

A classic all-round quickdraw that is suitable for trad, sport or winter climbing.



11mm Dynatec
12cm, 18cm, 25cm

› Phantom

Weighing just 65g, the Phantom is the ultimate lightweight quickdraw. Also available on 60cm sling as an alpine quickdraw.



11mm Dynatec
12cm, 18cm, 25cm, 60cm

› Alpha Sport

Updated

An ergonomic sport climbing quickdraw that gives confident handling, easy clipping, and durability for working routes.



Nylon vari-width
12cm, 18cm, 25cm

› Shadow

Updated

A lightweight sport quickdraw that is still tough enough to withstand working routes. Ideal for redpointing and onsighting.



Nylon vari-width
12cm, 18cm, 25cm

› Shadow/Spectre Hybrid

A Shadow/Spectre hybrid on a vari-width quickdraw for long sport routes when weight saving is at a premium.



Nylon vari-width
12cm, 18cm, 25cm

› Thomas Dauser

Un Gusto della Liberta (9a),
Ulassai, Sardinia.

📷 Klaas Willems

DESCRIPTION	PRODUCT CODE	COLOUR	LENGTH	WEIGHT	GATE OPENING	CONFORMANCE
Alpha Trad Quickdraw 12cm	A508-12RD	Titanium/Red	12cm	79g	25mm	EN12275:2013 B, EN566:2017
Alpha Trad Quickdraw 12cm 6 Pack	A508-12RDP6	Titanium/Red	12cm	474g	25mm	EN12275:2013 B, EN566:2017
Alpha Trad Quickdraw 18cm	A508-18RD	Titanium/Red	18cm	81g	25mm	EN12275:2013 B, EN566:2017
Alpha Trad Quickdraw 18cm 6 Pack	A508-18RDP6	Titanium/Red	18cm	486g	25mm	EN12275:2013 B, EN566:2017
Alpha Trad Quickdraw 25cm	A508-25RD	Titanium/Red	25cm	84g	25mm	EN12275:2013 B, EN566:2017
Alpha Trad Quickdraw 12cm	A508GD-12	Silver/Gold	12cm	79g	25mm	EN12275:2013 B, EN566:2017
Alpha Trad Quickdraw 12cm 6 Pack	A508GD-12P6	Silver/Gold	12cm	474g	25mm	EN12275:2013 B, EN566:2017
Alpha Trad Quickdraw 18cm	A508GY-18	Silver/Titanium	18cm	81g	25mm	EN12275:2013 B, EN566:2017
Alpha Trad Quickdraw 18cm 6 Pack	A508GY-18P6	Silver/Titanium	18cm	486g	25mm	EN12275:2013 B, EN566:2017
Alpha Trad Quickdraw 25cm	A508RD-25	Silver/Red	25cm	84g	25mm	EN12275:2013 B, EN566:2017

DESCRIPTION	PRODUCT CODE	COLOUR	LENGTH	WEIGHT	GATE OPENING	CONFORMANCE
Chimera Quickdraw 12cm	A398-12LG	Titanium/Lime	12cm	69g	21mm	EN12275:2013 B, EN566:2017
Chimera Quickdraw 12cm 6 Pack	A398-12LGP6	Titanium/Lime	12cm	414g	21mm	EN12275:2013 B, EN566:2017
Chimera Quickdraw 18cm	A398-18LG	Titanium/Lime	18cm	71g	21mm	EN12275:2013 B, EN566:2017
Chimera Quickdraw 18cm 6 Pack	A398-18LGP6	Titanium/Lime	18cm	426g	21mm	EN12275:2013 B, EN566:2017
Chimera Quickdraw 25cm	A398-25LG	Titanium/Lime	25cm	74g	21mm	EN12275:2013 B, EN566:2017
Chimera Quickdraw 12cm	A398-12PR	Titanium/Purple	12cm	69g	21mm	EN12275:2013 B, EN566:2017
Chimera Quickdraw 12cm 6 Pack	A398-12PRP6	Titanium/Purple	12cm	414g	21mm	EN12275:2013 B, EN566:2017
Chimera Quickdraw 18cm	A398-18PR	Titanium/Purple	18cm	71g	21mm	EN12275:2013 B, EN566:2017
Chimera Quickdraw 18cm 6 Pack	A398-18PRP6	Titanium/Purple	18cm	426g	21mm	EN12275:2013 B, EN566:2017
Chimera Quickdraw 25cm	A398-25PR	Titanium/Purple	25cm	74g	21mm	EN12275:2013 B, EN566:2017
Chimera Alpine Quickdraw 60cm	A398-60PR	Titanium/Purple	60cm	80g	21mm	EN12275:2013 B, EN566:2017

DESCRIPTION	PRODUCT CODE	COLOUR	LENGTH	WEIGHT	GATE OPENING	CONFORMANCE
Spectre Quickdraw 12cm	A358-12BL	Silver/Blue	12cm	75g	23mm	EN12275:2013 B, EN566:2017
Spectre Quickdraw 12cm 6 Pack	A358-12BLP6	Silver/Blue	12cm	450g	23mm	EN12275:2013 B, EN566:2017
Spectre Quickdraw 18cm	A358-18BL	Silver/Blue	18cm	77g	23mm	EN12275:2013 B, EN566:2017
Spectre Quickdraw 18cm 6 Pack	A358-18BLP6	Silver/Blue	18cm	462g	23mm	EN12275:2013 B, EN566:2017
Spectre Quickdraw 25cm	A358-25BL	Silver/Blue	25cm	80g	23mm	EN12275:2013 B, EN566:2017
Spectre Quickdraw 12cm	A358-12GR	Silver/Green	12cm	75g	23mm	EN12275:2013 B, EN566:2017
Spectre Quickdraw 12cm 6 Pack	A358-12GRP6	Silver/Green	12cm	450g	23mm	EN12275:2013 B, EN566:2017
Spectre Quickdraw 18cm	A358-18GR	Silver/Green	18cm	77g	23mm	EN12275:2013 B, EN566:2017
Spectre Quickdraw 18cm 6 Pack	A358-18GRP6	Silver/Green	18cm	462g	23mm	EN12275:2013 B, EN566:2017
Spectre Quickdraw 25cm	A358-25GR	Silver/Green	25cm	80g	23mm	EN12275:2013 B, EN566:2017
Spectre Quickdraw 12cm	A358-12	Silver/Gold	12cm	75g	23mm	EN12275:2013 B, EN566:2017
Spectre Quickdraw 12cm 6 Pack	A358-12P6	Silver/Gold	12cm	450g	23mm	EN12275:2013 B, EN566:2017
Spectre Quickdraw 18cm	A358-18	Silver/Titanium	18cm	77g	23mm	EN12275:2013 B, EN566:2017
Spectre Quickdraw 18cm 6 Pack	A358-18P6	Silver/Titanium	18cm	462g	23mm	EN12275:2013 B, EN566:2017
Spectre Quickdraw 25cm	A358-25	Silver/Red	25cm	80g	23mm	EN12275:2013 B, EN566:2017

DESCRIPTION	PRODUCT CODE	COLOUR	LENGTH	WEIGHT	GATE OPENING	CONFORMANCE
Phantom Quickdraw 12cm	A318-12OR	Silver/Orange	12cm	65g	21mm	EN12275:2013 B, EN566:2017
Phantom Quickdraw 12cm 6 Pack	A318-12ORP6	Silver/Orange	12cm	390g	21mm	EN12275:2013 B, EN566:2017
Phantom Quickdraw 18cm	A318-18OR	Silver/Orange	18cm	67g	21mm	EN12275:2013 B, EN566:2017
Phantom Quickdraw 18cm 6 Pack	A318-18ORP6	Silver/Orange	18cm	402g	21mm	EN12275:2013 B, EN566:2017
Phantom Quickdraw 25cm	A318-25OR	Silver/Orange	25cm	70g	21mm	EN12275:2013 B, EN566:2017
Phantom Alpine Quickdraw 60cm	A318-60OR	Silver/Orange	60cm	76g	21mm	EN12275:2013 B, EN566:2017

DESCRIPTION	PRODUCT CODE	COLOUR	LENGTH	WEIGHT	GATE OPENING	CONFORMANCE
Alpha Sport Quickdraw 12cm	A526LG-12VW	Titanium/Lime	12cm	112g	22/25mm	EN12275:2013 B, EN566:2017
Alpha Sport Quickdraw 12cm 6 Pack	A526LG-12VWP6	Titanium/Lime	12cm	672g	22/25mm	EN12275:2013 B, EN566:2017
Alpha Sport Quickdraw 18cm	A526LG-18VW	Titanium/Lime	18cm	117g	22/25mm	EN12275:2013 B, EN566:2017
Alpha Sport Quickdraw 18cm 6 Pack	A526LG-18VWP6	Titanium/Lime	18cm	702g	22/25mm	EN12275:2013 B, EN566:2017
Alpha Sport Quickdraw 25cm	A526LG-25VW	Titanium/Lime	25cm	122g	22/25mm	EN12275:2013 B, EN566:2017
Alpha Sport Quickdraw 12cm	A526RD-12VW	Titanium/Red	12cm	112g	22/25mm	EN12275:2013 B, EN566:2017
Alpha Sport Quickdraw 12cm 6 Pack	A526RD-12VWP6	Titanium/Red	12cm	672g	22/25mm	EN12275:2013 B, EN566:2017
Alpha Sport Quickdraw 18cm	A526RD-18VW	Titanium/Red	18cm	117g	22/25mm	EN12275:2013 B, EN566:2017
Alpha Sport Quickdraw 18cm 6 Pack	A526RD-18VWP6	Titanium/Red	18cm	702g	22/25mm	EN12275:2013 B, EN566:2017
Alpha Sport Quickdraw 25cm	A526RD-25VW	Titanium/Red	25cm	122g	22/25mm	EN12275:2013 B, EN566:2017

DESCRIPTION	PRODUCT CODE	COLOUR	LENGTH	WEIGHT	GATE OPENING	CONFORMANCE
Shadow Quickdraw 12cm	A306BL-12	Titanium/Blue	12cm	103g	20/25mm	EN12275:2013 B, EN566:2017
Shadow Quickdraw 12cm 6 Pack	A306BL-12P6	Titanium/Blue	12cm	618g	20/25mm	EN12275:2013 B, EN566:2017
Shadow Quickdraw 18cm	A306BL-18	Titanium/Blue	18cm	108g	20/25mm	EN12275:2013 B, EN566:2017
Shadow Quickdraw 18cm 6 Pack	A306BL-18P6	Titanium/Blue	18cm	648g	20/25mm	EN12275:2013 B, EN566:2017
Shadow Quickdraw 25cm	A306BL-25	Titanium/Blue	25cm	113g	20/25mm	EN12275:2013 B, EN566:2017
Shadow Quickdraw 12cm	A306P-12VW	Titanium/Purple	12cm	103g	20/25mm	EN12275:2013 B, EN566:2017
Shadow Quickdraw 12cm 6 Pack	A306P-12VWP6	Titanium/Purple	12cm	618g	20/25mm	EN12275:2013 B, EN566:2017
Shadow Quickdraw 18cm	A306P-18VW	Titanium/Purple	18cm	108g	20/25mm	EN12275:2013 B, EN566:2017
Shadow Quickdraw 18cm 6 Pack	A306P-18VWP6	Titanium/Purple	18cm	648g	20/25mm	EN12275:2013 B, EN566:2017
Shadow Quickdraw 25cm	A306P-25VW	Titanium/Purple	25cm	113g	20/25mm	EN12275:2013 B, EN566:2017

DESCRIPTION	PRODUCT CODE	COLOUR	LENGTH	WEIGHT	GATE OPENING	CONFORMANCE
Shadow/Spectre Hybrid Quickdraw 12cm	A301-358PR-12	Titanium/Purple	12cm	93g	20/23mm	EN12275:2013 B, EN566:2017
Shadow/Spectre Hybrid Quickdraw 12cm 6 Pack	A301-358PR-12P6	Titanium/Purple	12cm	558g	20/23mm	EN12275:2013 B, EN566:2017
Shadow/Spectre Hybrid Quickdraw 18cm	A301-358PR-18	Titanium/Purple	18cm	98g	20/23mm	EN12275:2013 B, EN566:2017
Shadow/Spectre Hybrid Quickdraw 18cm 6 Pack	A301-358PR-18P6	Titanium/Purple	18cm	588g	20/23mm	EN12275:2013 B, EN566:2017
Shadow/Spectre Hybrid Quickdraw 25cm	A301-358PR-25	Titanium/Purple	25cm	103g	20/23mm	EN12275:2013 B, EN566:2017
Shadow/Spectre Hybrid Quickdraw 12cm	A301-358BL-12	Titanium/Blue	12cm	93g	20/23mm	EN12275:2013 B, EN566:2017
Shadow/Spectre Hybrid Quickdraw 12cm 6 Pack	A301-358BL-12P6	Titanium/Blue	12cm	558g	20/23mm	EN12275:2013 B, EN566:2017
Shadow/Spectre Hybrid Quickdraw 18cm	A301-358BL-18	Titanium/Blue	18cm	98g	20/23mm	EN12275:2013 B, EN566:2017
Shadow/Spectre Hybrid Quickdraw 18cm 6 Pack	A301-358BL-18P6	Titanium/Blue	18cm	588g	20/23mm	EN12275:2013 B, EN566:2017
Shadow/Spectre Hybrid Quickdraw 25cm	A301-358BL-25	Titanium/Blue	25cm	103g	20/23mm	EN12275:2013 B, EN566:2017

Slings



› James McHaffie
Youtopia (E8 6c),
Llanberis Pass, Wales.
📷 Ray Wood



› Dynatec 8mm

Ultra-thin, lightweight slings for minimising rack weight and ideal for threads



› Dynatec 11mm

Lightweight slings for creating threads, runners and anchors.



› Nylon 16mm



Durable nylon slings for creating threads and anchors.

iD option available



› Nylon 26mm



Strong and durable nylon slings for heavy duty use.

iD option available



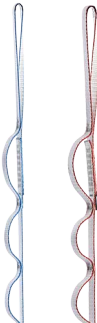
› Nylon Vari-width

Sport climbing slings that are easy to pull on when working routes.



› Dynatec Daisy Chains

Dynatec daisy chain for aid climbing



› Nylon Daisy Chain

Nylon daisy chain for aid climbing

DESCRIPTION	PRODUCT CODE	LENGTH	COLOUR	WEIGHT	STRENGTH	CONFORMANCE
8mm Dynatec Sling	SP0830GR	30cm	Green	10g	22kN	EN566:2017
8mm Dynatec Sling	SP0860GD	60cm	Gold	19g	22kN	EN566:2017
8mm Dynatec Sling	SP0860PR	60cm	Purple	19g	22kN	EN566:2017
8mm Dynatec Sling	SP08120GY	120cm	Grey	35g	22kN	EN566:2017
8mm Dynatec Sling	SP08120RD	120cm	Red	35g	22kN	EN566:2017
8mm Dynatec Sling	SP08240GR	240cm	Green	68g	22kN	EN566:2017
8mm Dynatec Sling	SP08240BL	240cm	Blue	68g	22kN	EN566:2017
8mm Dynatec Sling	SP08400BL	400cm	Blue	110g	22kN	EN566:2017

DESCRIPTION	PRODUCT CODE	LENGTH	COLOUR	WEIGHT	STRENGTH	CONFORMANCE
11mm Dynatec Quickdraw Sling	SP1112AS	12cm	Gold	9g	22kN	EN566:2017, EN354:2010, EN795:2012 B, UIAA104
11mm Dynatec Quickdraw Sling	SP1118AS	18cm	Grey	14g	22kN	EN566:2017, EN354:2010, EN795:2012 B, UIAA104
11mm Dynatec Quickdraw Sling	SP1125AS	25cm	Red	18g	22kN	EN566:2017, EN354:2010, EN795:2012 B, UIAA104
11mm Dynatec Sling	SP1160OR	60cm	Orange	26g	22kN	EN566:2017, EN354:2010, EN795:2012 B, UIAA104
11mm Dynatec Sling	SP1160PR	60cm	Purple	26g	22kN	EN566:2017, EN354:2010, EN795:2012 B, UIAA104
11mm Dynatec Sling	SP1160GD	60cm	Gold	26g	22kN	EN566:2017, EN354:2010, EN795:2012 B, UIAA104
11mm Dynatec Sling	SP11120GY	120cm	Grey	52g	22kN	EN566:2017, EN354:2010, EN795:2012 B, UIAA104
11mm Dynatec Sling	SP11120LG	120cm	Lime	52g	22kN	EN566:2017, EN354:2010, EN795:2012 B, UIAA104
11mm Dynatec Sling	SP11120RD	120cm	Red	52g	22kN	EN566:2017, EN354:2010, EN795:2012 B, UIAA104
11mm Dynatec Sling	SP11240BL	240cm	Blue	104g	22kN	EN566:2017, EN354:2010, EN795:2012 B, UIAA104
11mm Dynatec Sling	SP11240GR	240cm	Green	104g	22kN	EN566:2017, EN354:2010, EN795:2012 B, UIAA104

DESCRIPTION	PRODUCT CODE	LENGTH	COLOUR	WEIGHT	STRENGTH	CONFORMANCE
16mm Nylon Quickdraw Sling 12cm	MA1612AS	12cm	Anthracite	14g	22kN	EN566:2017
16mm Nylon Quickdraw Sling 18cm	MA1618AS	18cm	Anthracite	19g	22kN	EN566:2017
16mm Nylon Quickdraw Sling 25cm	MA1625AS	25cm	Anthracite	26g	22kN	EN566:2017
16mm Nylon Sling 60cm	MA1660BLK	60cm	Black	47g	22kN	EN566:2017, EN354:2010, EN795:2012 B
16mm Nylon Sling 60cm	MA1660RD	60cm	Red	47g	22kN	EN566:2017, EN354:2010, EN795:2012 B
16mm Nylon Sling 120cm	MA16120BLK	120cm	Black	92g	22kN	EN566:2017, EN354:2010, EN795:2012 B
16mm Nylon Sling 120cm	MA16120BL	120cm	Blue	92g	22kN	EN566:2017, EN354:2010, EN795:2012 B
16mm Nylon Sling 240cm	MA16240BLK	240cm	Black	180g	22kN	EN566:2017, EN354:2010, EN795:2012 B
16mm Nylon Sling 240cm	MA16240RD	240cm	Red	180g	22kN	EN566:2017, EN354:2010, EN795:2012 B

DESCRIPTION	PRODUCT CODE	LENGTH	COLOUR	WEIGHT	STRENGTH	CONFORMANCE
26mm Nylon Sling 60cm	MA2660BLK	60cm	Black	72g	30kN	EN566:2017, EN354:2010, EN795:2012 B
26mm Nylon Sling 120cm	MA26120BLK	120cm	Black	138g	30kN	EN566:2017, EN354:2010, EN795:2012 B
26mm Nylon Sling 240cm	MA26240BLK	240cm	Black	276g	30kN	EN566:2017, EN354:2010, EN795:2012 B

DESCRIPTION	PRODUCT CODE	LENGTH	COLOUR	WEIGHT	STRENGTH	CONFORMANCE
Nylon Variwidth Logo Quickdraw Sling 12cm	MA16SL12	12cm	Anthracite	18g	22kN	EN566:2017
Nylon Variwidth Logo Quickdraw Sling 18mm	MA16SL18	18cm	Anthracite	24g	22kN	EN566:2017
Nylon Variwidth Logo Quickdraw Sling 25cm	MA16SL25	25cm	Anthracite	33g	22kN	EN566:2017
Nylon Variwidth Quickdraw Keeper 5 Pack	KEEPVW-P5	-	Black	-	-	N/A

DESCRIPTION	PRODUCT CODE	LENGTH	COLOUR	STRENGTH	CONFORMANCE
Nylon Daisy Chain	DCNY135BL	135cm	Blue	22kN	EN566:2017
Nylon Daisy Chain	DCNY135RD	135cm	Red	22kN	EN566:2017

DESCRIPTION	PRODUCT CODE	LENGTH	COLOUR	STRENGTH	CONFORMANCE
Dynatec Daisy Chain	DCDY135BL	135cm	Blue	22kN	EN566:2017
Dynatec Daisy Chain	DCDY135RD	135cm	Red	22kN	EN566:2017

Locking Carabiners

› Bede West
Double Diamond (HVS 5b),
Lundy, England.
📷 Ray Wood



› Shadow HMS New

A large, yet lightweight, HMS biner with a short gate to maximise gate opening. The deep and wide top basket can take three clove hitches (<9.5mm rope).

MAJOR AXIS: 27kN
WEIGHT: 70g



› Phantom HMS

A compact, lightweight carabiner ideally suited for belaying and rigging.

MAJOR AXIS: 25kN
WEIGHT: 56g



› 30kN Boa iD

An oversized 30kN rigging biner that is ideally suited to anchor management.

iD option available

MAJOR AXIS: 30kN
WEIGHT: 95g



› Rhino

The Rhino gives confident control with modern belay devices. The signature horn prevents devices from rotating to the spine of the carabiner.

MAJOR AXIS: 27kN
WEIGHT: 72g



› Ceros iD

The Ceros features an internal wiregate to correctly align the carabiner on the belay loop; minimising the chance of cross-loading. The horn prevents devices from rotating to the spine of the carabiner.

iD option available

MAJOR AXIS: 25kN
WEIGHT: 86g



› Belay Master

A belay carabiner with a nylon clip that prevents cross-loading and ensures the gate is closed and locked.

MAJOR AXIS: 25kN
WEIGHT: 93g



› Shadow

A mid-size multipurpose locking carabiner.

MAJOR AXIS: 24kN
WEIGHT: 50g



› Phantom

A lightweight locking carabiner that helps minimise rack weight.

MAJOR AXIS: 24kN
WEIGHT: 42g



› Ultra O iD

A very stable locking carabiner that gives predictable loading and allows attachments to sit centrally.

iD option available

MAJOR AXIS: 25kN
Weight: 67g



› PerfectO

A compact, true oval carabiner that is easy to use one-handed. It provides effective centring of loads.

MAJOR AXIS: 24kN
WEIGHT: 60g



› Aero

A durable entry level carabiner.

MAJOR AXIS: 25kN
WEIGHT: 60g



› Revolver

A locking carabiner with an integrated pulley wheel that reduces friction and rope drag. It can be used in lightweight hauling systems.

MAJOR AXIS: 24kN
WEIGHT: 63g

DESCRIPTION	PRODUCT CODE	COLOUR	DIMENSION	WEIGHT	MBS (MAJOR AXIS)	MBS (MINOR AXIS)	MBS (GATE OPEN)	GATE OPENING	CONFORMANCE
Shadow HMS Screwgate	A682	Titanium/Lime	TBC	70g	26kN	9kN	7kN	22mm	EN362:2004 B, EN12275:2013 H
Shadow HMS Screwgate	A682BL	Blue	TBC	70g	26kN	9kN	7kN	22mm	EN362:2004 B, EN12275:2013 H
Shadow HMS Screwgate	A682GR	Green	TBC	70g	26kN	9kN	7kN	22mm	EN362:2004 B, EN12275:2013 H
Shadow HMS Screwgate	A682RD	Red	TBC	70g	26kN	9kN	7kN	22mm	EN362:2004 B, EN12275:2013 H
Shadow HMS Kwiklock	A683	Titanium/Red	TBC	74g	26kN	9kN	7kN	21mm	EN362:2004 B, EN12275:2013 H
Shadow HMS Locksafe	A687	Titanium/Green	TBC	75g	26kN	9kN	7kN	21mm	EN362:2004 B, EN12275:2013 H

DESCRIPTION	PRODUCT CODE	COLOUR	DIMENSION	WEIGHT	MBS (MAJOR AXIS)	MBS (MINOR AXIS)	MBS (GATE OPEN)	GATE OPENING	CONFORMANCE
Phantom HMS Screwgate	A572	Titanium/Lime	71 x 96mm	56g	25kN	9kN	7kN	20mm	EN362:2004 B, EN12275:2013 H
Phantom HMS Screwgate	A572BL	Blue	71 x 96mm	56g	25kN	9kN	7kN	20mm	EN362:2004 B, EN12275:2013 H
Phantom HMS Screwgate	A572GR	Green	71 x 96mm	56g	25kN	9kN	7kN	20mm	EN362:2004 B, EN12275:2013 H
Phantom HMS Screwgate	A572RD	Red	71 x 96mm	56g	25kN	9kN	7kN	20mm	EN362:2004 B, EN12275:2013 H
Phantom HMS Kwiklock	A573	Titanium/Red	71 x 96mm	61g	25kN	9kN	7kN	19mm	EN362:2004 B, EN12275:2013 H
Phantom HMS Locksafe	A577	Titanium/Green	71 x 96mm	62g	25kN	9kN	7kN	19mm	EN362:2004 B, EN12275:2013 H

DESCRIPTION	PRODUCT CODE	COLOUR	DIMENSION	WEIGHT	MBS (MAJOR AXIS)	MBS (MINOR AXIS)	MBS (GATE OPEN)	GATE OPENING	CONFORMANCE
30kN Boa HMS Screwgate	A902	Titanium/Lime	83 x 122mm	95g	30kN	12kN	9kN	24mm	EN362:2004 B, EN12275:2013 B/H, UIAA121:2009
30kN Boa HMS Kwiklock	A903	Titanium/Red	83 x 122mm	96g	30kN	12kN	9kN	23mm	EN362:2004 B, EN12275:2013 B/H, UIAA121:2009
30kN Boa HMS Locksafe	A907	Titanium/Green	83 x 122mm	97g	30kN	12kN	9kN	23mm	EN362:2004 B, EN12275:2013 B/H, UIAA121:2009

DESCRIPTION	PRODUCT CODE	COLOUR	DIMENSION	WEIGHT	MBS (MAJOR AXIS)	MBS (MINOR AXIS)	MBS (GATE OPEN)	GATE OPENING	CONFORMANCE
Rhino Screwgate	A542	Titanium/Lime	75 x 100mm	73g	27kN	9kN	7kN	20mm	EN362:2004 B, EN12275:2013 B/H
Rhino Kwiklock	A543	Titanium/Red	75 x 100mm	81g	27kN	9kN	7kN	19mm	EN362:2004 B, EN12275:2013 B/H
Rhino Locksafe	A547	Titanium/Green	75 x 100mm	81g	27kN	9kN	7kN	19mm	EN362:2004 B, EN12275:2013 B/H

DESCRIPTION	PRODUCT CODE	COLOUR	DIMENSION	WEIGHT	MBS (MAJOR AXIS)	MBS (MINOR AXIS)	MBS (GATE OPEN)	GATE OPENING	CONFORMANCE
Ceros Screwgate	A562	Titanium/Lime	74 x 121mm	86g	25kN	7kN	7kN	20mm	EN362:2004 T, EN12275:2013 B/H/T
Ceros Kwiklock	A563	Titanium/Red	74 x 121mm	92g	25kN	7kN	7kN	19mm	EN362:2004 T, EN12275:2013 B/H/T
Ceros Locksafe	A567	Titanium/Green	74 x 121mm	93g	25kN	7kN	7kN	19mm	EN362:2004 T, EN12275:2013 B/H/T

DESCRIPTION	PRODUCT CODE	COLOUR	DIMENSION	WEIGHT	MBS (MAJOR AXIS)	MBS (MINOR AXIS)	MBS (GATE OPEN)	GATE OPENING	CONFORMANCE
Belay Master	A872	Titanium/Lime	70 x 115mm	93g	25kN	10kN	8kN	20mm	EN362:2004 B/T, EN12275:2013 B/H, UIAA121:2009
Belay Master Clip (Old Gates)	A860-02	Black	ONA	25g	ONA	ONA	ONA	ONA	Not PPE
Belay Master Clip (New Gates)	A860-02S	Black	ONA	25g	ONA	ONA	ONA	ONA	Not PPE

DESCRIPTION	PRODUCT CODE	COLOUR	DIMENSION	WEIGHT (G)	MBS (MAJOR AXIS)	MBS (MINOR AXIS)	MBS (GATE OPEN)	GATE OPENING	CONFORMANCE
Shadow Screwgate	A302	Titanium/Lime	62 x 102mm	50g	24kN	7kN	9kN	18mm	EN362:2004 B, EN12275:2013 B, UIAA121:2009
Shadow Screwgate	A302BL	Blue/Titanium	62 x 102mm	50g	24kN	7kN	9kN	18mm	EN362:2004 B, EN12275:2013 B, UIAA121:2009
Shadow Screwgate	A302GR	Green/Titanium	62 x 102mm	50g	24kN	7kN	9kN	18mm	EN362:2004 B, EN12275:2013 B, UIAA121:2009
Shadow Screwgate	A302RD	Red/Titanium	62 x 102mm	50g	24kN	7kN	9kN	18mm	EN362:2004 B, EN12275:2013 B, UIAA121:2009
Shadow Screwgate Colour 3 Pack	A302-P3	Blue/Red/Green	62 x 102mm	150g	24kN	7kN	9kN	18mm	EN362:2004 B, EN12275:2013 B, UIAA121:2009
Shadow Kwiklock	A303	Titanium/Red	62 x 102mm	57g	24kN	7kN	9kN	17mm	EN362:2004 B, EN12275:2013 B, UIAA121:2009
Shadow Locksafe	A307	Titanium/Green	62 x 102mm	58g	24kN	7kN	9kN	17mm	EN362:2004 B, EN12275:2013 B, UIAA121:2009

DESCRIPTION	PRODUCT CODE	COLOUR	DIMENSION	WEIGHT (G)	MBS (MAJOR AXIS)	MBS (MINOR AXIS)	MBS (GATE OPEN)	GATE OPENING	CONFORMANCE
Phantom Screwgate	A312	Titanium/Lime	54 x 94mm	42g	24kN	9kN	9kN	15mm	EN362:2004 B, EN12275:2013 B, UIAA121:2009

DESCRIPTION	PRODUCT CODE	COLOUR	DIMENSION	WEIGHT	MBS (MAJOR AXIS)	MBS (MINOR AXIS)	MBS (GATE OPEN)	GATE OPENING	CONFORMANCE
Ultra O Screwgate	A322	Titanium/Lime	63 x 109mm	67g	25kN	12kN	7kN	22mm	EN362:2004 B, EN12275:2013 B, UIAA121:2009
Ultra O Screwgate	A322BL	Blue/Titanium	63 x 109mm	67g	25kN	12kN	7kN	22mm	EN362:2004 B, EN12275:2013 B, UIAA121:2009
Ultra O Screwgate	A322GR	Green/Titanium	63 x 109mm	67g	25kN	12kN	7kN	22mm	EN362:2004 B, EN12275:2013 B, UIAA121:2009
Ultra O Screwgate	A322RD	Red/Titanium	63 x 109mm	67g	25kN	12kN	7kN	22mm	EN362:2004 B, EN12275:2013 B, UIAA121:2009
Ultra O Screwgate Colour 3 Pack	A322-P3	Blue/Red/Green	63 x 109mm	201g	25kN	12kN	7kN	22mm	EN362:2004 B, EN12275:2013 B, UIAA121:2009
Ultra O Kwiklock	A323	Titanium/Red	63 x 109mm	74g	25kN	12kN	7kN	19mm	EN362:2004 B, EN12275:2013 B, UIAA121:2009
Ultra O Locksafe	A327	Titanium/Green	63 x 109mm	74g	25kN	12kN	7kN	19mm	EN362:2004 B, EN12275:2013 B, UIAA121:2009

DESCRIPTION	PRODUCT CODE	COLOUR	DIMENSION	WEIGHT	MBS (MAJOR AXIS)	MBS (MINOR AXIS)	MBS (GATE OPEN)	GATE OPENING	CONFORMANCE
PerfectO Screwgate	A592	Titanium/Lime	56 X 95mm	60g	24kN	7kN	7kN	16mm	EN12275:2013 X/B, EN362:2004 B
PerfectO Kwiklock	A593	Titanium/Red	56 X 95mm	66g	24kN	7kN	7kN	15mm	EN12275:2013 X/B, EN362:2004 B
PerfectO Locksafe	A597	Titanium/Green	56 X 95mm	66g	24kN	7kN	7kN	15mm	EN12275:2013 X/B, EN362:2004 B

DESCRIPTION	PRODUCT CODE	COLOUR	DIMENSION	WEIGHT (G)	MBS (MAJOR AXIS)	MBS (MINOR AXIS)	MBS (GATE OPEN)	GATE OPENING	CONFORMANCE
Aero Screwgate	A372	Titanium/Lime	62 x 102mm	60g	25kN	9kN	9kN	19mm	EN362:2004 B, EN12275:2013 B, UIAA121:2009
Aero Screwgate 5 Pack	A372-P5	Titanium/Lime	62 x 102mm	300g	25kN	9kN	9kN	19mm	EN362:2004 B, EN12275:2013 B, UIAA121:2009

DESCRIPTION	PRODUCT CODE	COLOUR	DIMENSION	WEIGHT	MBS (MAJOR AXIS)	MBS (MINOR AXIS)	MBS (GATE OPEN)	GATE OPENING	CONFORMANCE
Revolver Screwgate	A272	Titanium/Lime	60 x 109mm	63g	24kN	8kN	8kN	16mm	EN362:2004 B, EN12275:2013 B, UIAA121:2009
Revolver Kwiklock	A273	Titanium/Red	60 x 109mm	69g	24kN	8kN	8kN	15mm	EN362:2004 B, EN12275:2013 B, UIAA121:2009
Revolver Locksafe	A277	Titanium/Green	60 x 109mm	70g	24kN	8kN	8kN	15mm	EN362:2004 B, EN12275:2013 B, UIAA121:2009

Belay & Descent

› James McHaffie and Duncan Cunningham on the 1st ascent of *Suck my Karma* (E4 6a), Dinorwig Quarry, Wales.
📷 Ray Wood



› **Pivot**

A versatile, high performance belay device. The Pivot's shackle reduces the force needed to initiate lowering, increasing control when lowering one or two seconds in guide mode.



› **Pivot/Phantom HMS Belay Set**

A compact and lightweight technical belay set.



› **Mantis**

A very lightweight belay device that inspires confident belaying. It is suitable for all round climbing with single, half, or twin ropes.



› **Mantis/Ceros Belay Set**

Minimise the risk of cross-loading using the Ceros on your belay loop, together with the holding power of the Mantis.



› **Beetle**

A classic tube style belay device for belaying, lowering, and abseiling. Equally at home on the crag as it is at the gym.



› **Beetle/Shadow HMS Belay Set**

The perfect belay set for beginners that is suited to making the transition from indoors to outdoors.



DESCRIPTION	PRODUCT CODE	COLOUR	WEIGHT	ROPE DIAMETER	CONFORMANCE
Pivot	A1160BL	Blue	72g	half/twin: 7.3mm-9.2mm single: 8.7mm-11mm	EN15151-2:2012
Pivot	A1160GR	Green	72g	half/twin: 7.3mm-9.2mm single: 8.7mm-11mm	EN15151-2:2012
Pivot	A1160LG	Lime Green	72g	half/twin: 7.3mm-9.2mm single: 8.7mm-11mm	EN15151-2:2012
Pivot/Phantom HMS Set	A1160BL/572	Blue	130g	half/twin: 7.3mm-9.2mm single: 8.7mm-11mm	EN15151-2:2012
Pivot/Phantom HMS Set	A1160GR/572	Green	130g	half/twin: 7.3mm-9.2mm single: 8.7mm-11mm	EN15151-2:2012
Pivot/Phantom HMS Set	A1160LG/572	Lime Green	130g	half/twin: 7.3mm-9.2mm single: 8.7mm-11mm	EN15151-2:2012

DESCRIPTION	PRODUCT CODE	COLOUR	WEIGHT	ROPE DIAMETER	CONFORMANCE
Mantis	A1165OR	Orange	45g	half/twin: 7.3mm-9.2mm single: 8.5mm-11mm	EN15151-2:2012
Mantis	A1165PR	Purple	45g	half/twin: 7.3mm-9.2mm single: 8.5mm-11mm	EN15151-2:2012
Mantis	A1165BLT	Titanium	45g	half/twin: 7.3mm-9.2mm single: 8.5mm-11mm	EN15151-2:2012
Mantis/Ceros Set	A1165OR/562	Orange/Titanium	131g	half/twin: 7.3mm-9.2mm single: 8.5mm-11mm	EN15151-2:2012
Mantis/Ceros Set	A1165PR/562	Purple/Titanium	131g	half/twin: 7.3mm-9.2mm single: 8.5mm-11mm	EN15151-2:2012
Mantis/Ceros Set	A1165BLT/562	Titanium	131g	half/twin: 7.3mm-9.2mm single: 8.5mm-11mm	EN15151-2:2012

DESCRIPTION	PRODUCT CODE	COLOUR	WEIGHT	ROPE DIAMETER	CONFORMANCE
Beetle	A1175BL	Blue	54g	half/twin: 7.3mm-9.2mm single: 8.5mm-11mm	EN15151-2:2012
Beetle	A1175BLT	Titanium	54g	half/twin: 7.3mm-9.2mm single: 8.5mm-11mm	EN15151-2:2012
Beetle/Shadow HMS Blue	A1175BL/A682	Blue	123g	half/twin: 7.3mm-9.2mm single: 8.5mm-11mm	EN15151-2:2012
Beetle/Shadow HMS Titanium	A1175BLT/A682	Titanium	123g	half/twin: 7.3mm-9.2mm single: 8.5mm-11mm	EN15151-2:2012



› **Figure 8**

The classic abseil device, ideal for walls and centres running group abseil sessions.

DESCRIPTION	PRODUCT CODE	COLOUR	WEIGHT	ROPE DIAMETER	CONFORMANCE
Figure 8	A1150P	Silver	116g	7.3-9.2mm, 8.5-11mm	EN15151-2:2012
Figure 8/Belay Master Set	A1150/872	Silver/Titanium	208g	7.3-9.2mm, 8.5-11mm	EN15151-2:2012, EN362:2004 B/T, EN12275:1998 B/H

Harnesses

› Emma Twyford
The Big Bang (9a) redpoint attempt,
Lower Pen Trwyn, Wales.
📷 Ray Wood



› Trance

Lightweight and high performance. Perfect for modern sport climbing and hard trad climbing. Fixed leg loops. Available in XXS-L

WEIGHT: 295 / 315 / 335 / 355 / 370g



› Mithril

Men's lightweight, highly breathable, fully adjustable harness for climbing in all seasons

WEIGHT: 350 / 365 / 370 / 390g



› Renegade

All season, all mountain harness with reinforced lumbar support and hypalon inserts for winter racking. Plentiful gear loops for carrying the biggest of racks.

WEIGHT: 395 / 415 / 450g



› Viper

A perfect first harness. Highly featured and comfortable.

WEIGHT: 365 / 400 / 435g



› Super Couloir

The Super Couloir is a lightweight harness for mountaineering, ice climbing, and ski touring.

WEIGHT: 340 / 350 / 385 / 395g



› Venture

Women's lightweight, highly breathable, fully adjustable harness for climbing in all seasons.

WEIGHT: 320 / 340 / 365 / 380g



› Puma

A supportive, fully featured women's all round harness that is suitable for climbing in summer and winter.

WEIGHT: 350 / 370 / 395 / 430g



› Vixen

A perfect first harness for women. Highly featured and comfortable.

WEIGHT: 345 / 360 / 370 / 410g

DESCRIPTION	PRODUCT CODE	COLOUR	SIZE	WEIGHT	WAIST (IN)	WAIST (CM)	LEGS(IN)	LEGS (CM)	CONFORMANCE
Trance	HUI02PR-XXS	Purple	XXS	295g	24 - 27	61 - 68	19 - 21	49 - 54	EN12277:2015 C
Trance	HUI02PR-XS	Purple	XS	315g	24 - 27	61 - 68	19 - 21	49 - 54	EN12277:2015 C
Trance	HUI02PR-S	Purple	S	335g	26 - 30	67 - 76	21 - 23	53 - 58	EN12277:2015 C
Trance	HUI02PR-M	Purple	M	355g	30 - 33	75 - 85	22 - 24	57 - 62	EN12277:2015 C
Trance	HUI02PR-L	Purple	L	370g	33 - 37	83 - 94	24 - 26	61 - 66	EN12277:2015 C

DESCRIPTION	PRODUCT CODE	COLOUR	SIZE	WEIGHT	WAIST (IN)	WAIST (CM)	LEGS(IN)	LEGS (CM)	CONFORMANCE
Mithril	HM101RD-S	Red	S	358g	28 - 31	70 - 80	20 - 26	52 - 67	EN12277:2015 C
Mithril	HM101RD-M	Red	M	375g	31 - 35	78 - 88	22 - 28	56 - 71	EN12277:2015 C
Mithril	HM101RD-L	Red	L	391g	34 - 38	86 - 96	24 - 30	60 - 75	EN12277:2015 C
Mithril	HM101RD-XL	Red	XL	408g	37 - 41	94 - 104	25 - 31	64 - 79	EN12277:2015 C

DESCRIPTION	PRODUCT CODE	COLOUR	SIZE	WEIGHT	WAIST (IN)	WAIST (CM)	LEGS(IN)	LEGS (CM)	CONFORMANCE
Venture	HW101BL-XS	Blue	XS	320g	22 - 26	56 - 66	18 - 24	46 - 61	EN12277:2015 C
Venture	HW101BL-S	Blue	S	340g	25 - 29	64 - 74	20 - 26	52 - 67	EN12277:2015 C
Venture	HW101BL-M	Blue	M	365g	28 - 32	72 - 82	22 - 28	56 - 71	EN12277:2015 C
Venture	HW101BL-L	Blue	L	380g	31 - 35	80 - 90	24 - 30	60 - 75	EN12277:2015 C

DESCRIPTION	PRODUCT CODE	COLOUR	SIZE	WEIGHT	WAIST (IN)	WAIST (CM)	LEGS(IN)	LEGS (CM)	CONFORMANCE
Renegade	HM103RD-S	Red	S	395g	25 - 31	64 - 79	18 - 23	45 - 58	EN12277:2015 C
Renegade	HM103RD-M	Red	M	415g	30 - 36	75 - 91	20 - 25	50 - 63	EN12277:2015 C
Renegade	HM103RD-L	Red	L	450g	34 - 41	87 - 104	22 - 28	55 - 70	EN12277:2015 C

DESCRIPTION	PRODUCT CODE	COLOUR	SIZE	WEIGHT	WAIST (IN)	WAIST (CM)	LEGS(IN)	LEGS (CM)	CONFORMANCE
Puma	HW103PR-XS	Purple	XS	350g	22 - 27	57 - 69	17 - 20	43 - 52	EN12277:2015 C
Puma	HW103PR-S	Purple	S	370g	24 - 28	61 - 71	19 - 22	47 - 56	EN12277:2015 C
Puma	HW103PR-M	Purple	M	395g	26 - 31	66 - 80	21 - 24	53 - 62	EN12277:2015 C
Puma	HW103PR-L	Purple	L	430g	30 - 36	75 - 91	23 - 26	58 - 67	EN12277:2015 C

DESCRIPTION	PRODUCT CODE	COLOUR	SIZE	WEIGHT	WAIST (IN)	WAIST (CM)	LEGS(IN)	LEGS (CM)	CONFORMANCE
Viper	HM104BL-S	Blue	S	365g	25 - 31	64 - 79	18 - 23	45 - 58	EN12277:2015 C
Viper	HM104BL-M	Blue	M	400g	30 - 36	75 - 91	20 - 25	50 - 63	EN12277:2015 C
Viper	HM104BL-L	Blue	L	435g	34 - 41	87 - 104	22 - 28	55 - 70	EN12277:2015 C
Viper Packs*	HM104PKBL-S	Blue	S	TBC	25 - 31	64 - 79	18 - 23	45 - 58	EN12277:2015 C
Viper Packs*	HM104PKBL-M	Blue	M	TBC	30 - 36	75 - 91	20 - 25	50 - 63	EN12277:2015 C
Viper Packs*	HM104PKBL-L	Blue	L	TBC	34 - 41	87 - 104	22 - 28	55 - 70	EN12277:2015 C

DESCRIPTION	PRODUCT CODE	COLOUR	SIZE	WEIGHT	WAIST (IN)	WAIST (CM)	LEGS(IN)	LEGS (CM)	CONFORMANCE
Vixen	HW104BL-XS	Light Blue	XS	345g	22 - 27	57 - 69	17 - 20	43 - 52	EN12277:2015 C
Vixen	HW104BL-S	Light Blue	S	360g	24 - 28	61 - 71	19 - 22	47 - 56	EN12277:2015 C
Vixen	HW104BL-M	Light Blue	M	370g	26 - 31	66 - 80	21 - 24	53 - 62	EN12277:2015 C
Vixen	HW104BL-L	Light Blue	L	410g	30 - 36	75 - 91	23 - 26	58 - 67	EN12277:2015 C
Vixen Packs*	HW104PKBL-XS	Light Blue	XS	TBC	22 - 27	57 - 69	17 - 20	43 - 52	EN12277:2015 C
Vixen Packs*	HW104PKBL-S	Light Blue	S	TBC	24 - 28	61 - 71	19 - 22	47 - 56	EN12277:2015 C
Vixen Packs*	HW104PKBL-M	Light Blue	M	TBC	26 - 31	66 - 80	21 - 24	53 - 62	EN12277:2015 C
Vixen Packs*	HW104PKBL-L	Light Blue	L	TBC	30 - 36	75 - 91	23 - 26	58 - 67	EN12277:2015 C

DESCRIPTION	PRODUCT CODE	COLOUR	SIZE	WEIGHT	WAIST (IN)	WAIST (CM)	LEGS(IN)	LEGS (CM)	CONFORMANCE
Super Couloir	COUL-S	Black	S	340g	27 - 35	68 - 90	20 - 22	50 - 55	EN12277:2015 C
Super Couloir	COUL-M	Black	M	350g	31 - 39	79 - 100	24 - 28	60 - 70	EN12277:2015 C
Super Couloir	COUL-L	Black	L	385g	35 - 45	90 - 114	26 - 30	65 - 75	EN12277:2015 C
Super Couloir	COUL-XL	Black	XL	395g	39 - 51	100 - 130	28 - 31	70 - 80	EN12277:2015 C



› Tom Kitten

A full body kids harness that maximises support and stability for younger climbers.

WEIGHT: 330g



› Tomcat

The Tomcat is a well featured harness that is sized specifically for younger climbers.

WEIGHT: 385g

DESCRIPTION	PRODUCT CODE	COLOUR	SIZE	WEIGHT	WAIST (IN)	WAIST (CM)	LEGS(IN)	LEGS (CM)	CONFORMANCE
Tom Kitten	TOMK	Red/Grey	One size	330g	19 - 25	30 - 62	9 - 22	23 - 55	EN12277:2015 B
Tomcat	TOMC	Red/Grey	One size	385g	20 - 30	50 -75	16 - 20	40 - 50	EN12277:2015 C

* Harness packs contain a harness, chalk bag, chalk ball, belay device and locking carabiner

Winter Equipment

› Nick Bullock
Colonial Virgin (VI/7),
Cader Idris, Wales.
📷 Ray Wood



› Switch

A top end, technical climbing tool for the steepest routes.



› Apex

A high performance ice axe that excels on steep routes and for technical mountaineering.



› Fly

A versatile tool, ideal for those who want a durable axe for climbing and mountaineering. Features removeable hand-rests.



› Raptor

A robust mountaineering tool with the ability to handle steeper terrain.



› Cirque

A classic ice axe design that is ideal on winter walking and mountaineering routes.

DESCRIPTION	PRODUCT CODE	COLOUR	LENGTH	WEIGHT	CONFORMANCE
Switch Axe	A0391	Red	50cm	684g	EN13089:2011 Type 2
Switch Hammer	A0392	Red	50cm	676g	EN13089:2011 Type 2

DESCRIPTION	PRODUCT CODE	COLOUR	LENGTH	WEIGHT	CONFORMANCE
Apex Axe	A0381	Green	50cm	673g	EN13089:2011 Type 2
Apex Hammer	A0382	Green	50cm	658g	EN13089:2011 Type 2

DESCRIPTION	PRODUCT CODE	COLOUR	LENGTH	WEIGHT	CONFORMANCE
Fly Axe	A0371	Orange	50cm	718g	EN13089:2011 Type 2
Fly Hammer	A0372	Orange	50cm	721g	EN13089:2011 Type 2

DESCRIPTION	PRODUCT CODE	COLOUR	LENGTH	WEIGHT	CONFORMANCE
Raptor Axe	A0351	Purple	50cm	644g	EN13089:2011 Type 2, UIAA 152:2018
Raptor Axe	A0353	Purple	55cm	665g	EN13089:2011 Type 2, UIAA 152:2018
Raptor Hammer	A0352	Purple	50cm	664g	EN13089:2011 Type 2, UIAA 152:2018
Raptor Hammer	A0354	Purple	55cm	685g	EN13089:2011 Type 2, UIAA 152:2018

DESCRIPTION	PRODUCT CODE	COLOUR	LENGTH	WEIGHT	CONFORMANCE
Cirque Axe	A0341	Blue	50cm	565g	EN13089:2011 Type 2, UIAA 152:2018
Cirque Axe	A0342	Blue	55cm	583g	EN13089:2011 Type 2, UIAA 152:2018
Cirque Axe	A0343	Blue	60cm	604g	EN13089:2011 Type 2, UIAA 152:2018
Cirque Axe	A0344	Blue	65cm	626g	EN13089:2011 Type 2, UIAA 152:2018
Cirque Hammer	A0346	Blue	50cm	591g	EN13089:2011 Type 2, UIAA 152:2018



› Nick Bullock
descending from the basin below the south face of
Mount Gongga (Minya Konka - 7,556 metres),
China.
📷 Paul Ramsden.



› Deadman

The Deadman offers protection when snow is the only option.



› Bulldog & Terrier

Versatile drive-in pieces of winter protection that can create secure placements in frozen turf and thin cracks.



› Freedom Leash

Tethers that give the freedom of climbing leashless, but stop you losing your axe if you drop it.



› Slide Lock Leash

Intuitive to use and operable with one hand featuring a minimalist design for improved functionality and durability.



› Grippy Grip Tape

Grippy Grip Tape in three metre rolls is perfect for providing extra grip when using the upper hand rest and provides extra insulation.



› Vault

A robust aluminium racking carabiner that keeps valuable ice screws safe and secure, and allows efficient selection of the correct length.

MBS: 3kN
WEIGHT: 63g
Non-PPE

DESCRIPTION	PRODUCT CODE	COLOUR	WEIGHT	CONFORMANCE
Deadman	A1300	Red	360g	Manufacturers Technical Specification QAP74
DESCRIPTION	PRODUCT CODE	COLOUR	WEIGHT	CONFORMANCE
Bulldog	C1375	Black	150g	Manufacturers Technical Specification QAP77
DESCRIPTION	PRODUCT CODE	COLOUR	WEIGHT	CONFORMANCE
Terrier	C1385	Black	73g	Manufacturers Technical Specification QAP77
DESCRIPTION	PRODUCT CODE	COLOUR	WEIGHT	CONFORMANCE
Freedom Leash	A0130	Black	42g	N/A
Freedom Leash/Phantom Pack	A0130-318	Black/Red/Green	100g	EN12275:2013 B
DESCRIPTION	PRODUCT CODE	COLOUR	WEIGHT	CONFORMANCE
Slide Lock Leash	A0140	Black	25g	N/A
DESCRIPTION	PRODUCT CODE	COLOUR	WEIGHT	CONFORMANCE
Grippy Grip Tape	AOPIB-3	Black	37g	N/A
DESCRIPTION	PRODUCT CODE	COLOUR	WEIGHT	CONFORMANCE
Vault Wire Gate	A558	Silver/Red	63g	N/A
Vault Lock	A552	Red/Silver	79g	N/A

Bags & Accessories

Bags & Accessories

› Ben Bransby
The Vagina (V8),
Rocktown, Georgia, USA.
📷 Ray Wood



› Short Haul

New

A compact version of our popular Flight bag that looks as good going to the office or heading to the gym after work. Laptops up to 15 inches can be carried in a built-in sleeve.

VOLUME: 30l



› Flight

Updated

A sport climbing pack, sized to give you maximum carrying capacity and still fit most airline hand luggage restrictions.

VOLUME: 45l



› Classic Rope Bag

Updated

The Classic Rope Bag with an internal tarp transports your rope and accessories efficiently and comfortably.

VOLUME: 32l



› Pitcher

Updated

A simple and versatile tarp based rope bag that is ideal for the climbing wall.

VOLUME: 26l



› Zenith

Updated

A streamlined climbing pack for carrying equipment on multipitch routes.

VOLUME: 18l



› Void

A hard wearing duffel bag with plenty of carrying capacity for climbing holidays and expeditions.

VOLUME: 45 / 75 / 100l



› Porter

A robust equipment storage bag that is ideal for moving heavy loads.

VOLUME: 45 / 70l



DESCRIPTION	PRODUCT CODE	COLOUR	SIZE	WEIGHT (G)
Short Haul	BC22BK	Black	30L	TBC
Short Haul	BC22BL	Blue	30L	TBC
Short Haul	BC22RD	Red	30L	TBC

DESCRIPTION	PRODUCT CODE	COLOUR	SIZE	WEIGHT
Flight	BC21BK	Black	45L	1560g
Flight	BC21BL	Blue	45L	1560g
Flight	BC21RD	Red	45L	1560g

DESCRIPTION	PRODUCT CODE	COLOUR	SIZE	WEIGHT
Classic Rope Bag	RB31BK	Black	32L	650g
Classic Rope Bag	RB31BL	Blue	32L	650g
Classic Rope Bag	RB31RD	Red	32L	650g
Classic Rope Bag	RB31YE	Yellow	32L	650g

DESCRIPTION	PRODUCT CODE	COLOUR	SIZE	WEIGHT
Pitcher Rope Bag	RB32BL	Blue	26L	470g
Pitcher Rope Bag	RB32RD	Red	26L	470g
Pitcher Rope Bag	RB32YE	Yellow	26L	470g

DESCRIPTION	PRODUCT CODE	COLOUR	SIZE	WEIGHT
Zenith	BC20BL	Blue	18l	580g
Zenith	BC20RD	Red	18L	580g
Zenith	BC20YE	Yellow	18L	580g

DESCRIPTION	PRODUCT CODE	COLOUR	SIZE	WEIGHT
Void Duffle	BC13GY-L	Grey/Grey	100L	1560g
Void Duffle	BC13RD-M	Grey/Red	75L	1140g
Void Duffle	BC13BL-S	Grey/Blue	45L	1050g

DESCRIPTION	PRODUCT CODE	COLOUR	SIZE	WEIGHT
Porter Rope Bag	BI23BLK-45	Black	45L	1250g
Porter Rope Bag	BI23BLK-70	Black	70L	1420g



› Edge

Updated

A chalk bucket with plenty of carrying capacity for all your bouldering essentials.



› Trad

Updated

A large chalk bag for carrying lots of chalk on long routes.



› Traction

Updated

A medium sized chalk bag suitable for all types of climbing.



› Tube

Updated

A classic style chalk bag suitable for all types of climbing.



› Chalk Bag Belt

An adjustable belt with a quick release buckle.



DESCRIPTION	PRODUCT CODE	COLOUR	WEIGHT (G)
Edge Boulder Chalk Bag	CB34BL	Blue	278
Edge Boulder Chalk Bag	CB34RD	Red	278
Edge Boulder Chalk Bag	CB34YE	Yellow	278

DESCRIPTION	PRODUCT CODE	COLOUR	WEIGHT (G)
Trad Chalk Bag	CB33BK	Black	103
Trad Chalk Bag	CB33BL	Blue	103
Trad Chalk Bag	CB33RD	Red	103
Trad Chalk Bag	CB33YE	Yellow	103

DESCRIPTION	PRODUCT CODE	COLOUR	WEIGHT (G)
Traction Chalk Bag	CB32BK	Black	109
Traction Chalk Bag	CB32BL	Blue	109
Traction Chalk Bag	CB32RD	Red	109
Traction Chalk Bag	CB32YE	Yellow	109

DESCRIPTION	PRODUCT CODE	COLOUR	WEIGHT (G)
Tube Chalk Bag	CB31BK	Black	79
Tube Chalk Bag	CB31BL	Blue	79
Tube Chalk Bag	CB31RD	Red	79
Tube Chalk Bag	CB31YE	Yellow	79

DESCRIPTION	PRODUCT CODE	COLOUR
Chalk Bag Belt	CB2506BL	Blue
Chalk Bag Belt	CB2506YE	Yellow
Chalk Bag Belt	CB2506BK	Black
Chalk Bag Belt	CB2506RD	Red

Chalk



› **Chalk Ball**

Chalk balls keep chalk contained, and are sized to give your hands a good covering with just one squeeze.



› **Chalk Tub**

100g of pure magnesium carbonate in a reusable container.



› **Crushed Chalk Bag**

The Crushed Chalk bag contains 250g of pure magnesium carbonate, enough for the biggest boulder bucket.



› **Liquid Chalk**

Liquid chalk forms a dry layer on your skin, keeping your hands dry on routes and boulder problems.



› **Finger Tape**

Low stretch finger tape for injury support, and taping flappers and cuts.

DESCRIPTION	PRODUCT CODE	SIZE	WEIGHT
Chalk Ball	DMMCBALLS	One size	56g
Crushed Chalk Tub	DMMCTUB	100g	100g
Crushed Chalk Bag	DMMCBAG	250g	250g

DESCRIPTION	PRODUCT CODE	SIZE	WEIGHT
Liquid Chalk	DMMCLIQUID	200ml	197g
Finger Tape	DMMCFT25	ONA	62g



› **Guide Book Covers**

A guidebook cover for transportation and protection of your guidebook.

SIZE: S / L

DESCRIPTION	PRODUCT CODE	COLOUR	SIZE	WEIGHT
Guide Book Holders	BC24	Grey	S	105g
Guide Book Holders	BC25	Grey	L	115g

Bouldering Pads



› **Highball**

The hinged style Highball is a popular pad with a great landing area.

DESCRIPTION	PRODUCT CODE	COLOUR	DIMENSIONS	WEIGHT
Highball	BMAT-HBALL-GR	Green	1220x990x105mm	5400g
Highball	BMAT-HBALL	Yellow	1220x990x105mm	5400g



Clothing

› Charlie Woodburn
Only on Earth (5.11+),
T-Wall, Tennessee, USA.
📷 Ray Wood

Hoodies

› Hoodies

A cosy pullover hoodie made from 60% recycled pre-consumer organically grown cotton and 40% recycled post-consumer polyester.



› Kids' Hoodie

A kid's hoodie featuring a twist on our logo with 'Climb Now Homework Later' beneath it on the back (65% cotton 35% polyester).



DESCRIPTION	PRODUCT NAME	COLOUR	SIZE
DMM Hoodie	SUIBERRY-XS	Raspberry	XS
DMM Hoodie	SUIBERRY-S	Raspberry	S
DMM Hoodie	SUIBERRY-M	Raspberry	M
DMM Hoodie	SUIBERRY-L	Raspberry	L
DMM Hoodie	SUIBERRY-XL	Raspberry	XL
DMM Hoodie	SUINIGHT-XS	Midnight	XS
DMM Hoodie	SUINIGHT-S	Midnight	S
DMM Hoodie	SUINIGHT-M	Midnight	M
DMM Hoodie	SUINIGHT-L	Midnight	L
DMM Hoodie	SUINIGHT-XL	Midnight	XL

DESCRIPTION	PRODUCT NAME	COLOUR	SIZE (YRS)
Kid's Homework Hoodie	SK1BL-5/6	Blue	5/6
Kid's Homework Hoodie	SK1BL-7/8	Blue	7/8
Kid's Homework Hoodie	SK1BL-9/11	Blue	9/11
Kid's Homework Hoodie	SK1BL-XS	Blue	XS
Kid's Homework Hoodie	SK1RED-5/6	Red	5/6
Kid's Homework Hoodie	SK1RED-7/8	Red	7/8
Kid's Homework Hoodie	SK1RED-9/11	Red	9/11
Kid's Homework Hoodie	SK1RED-XS	Red	(11+)

T-shirts

All of our T-shirts meet the Global Organic Textile Standard (GOTS) that ensure organic status of textiles, from harvesting of the raw materials, through environmentally and socially responsible manufacturing. Made from 100% combed organic cotton they are also certified to carry Carbon Reduction and Fair Wear Foundation (FWF) labels. The carbon footprint is reduced by 90% in comparison to an identical product manufactured using conventional energy sources.



› Men’s DMM T-shirt

‘Climb Now Work Later’ wear a splash of inspiration on the back of your t-shirt with this strapline underneath our logo.



› Women’s DMM T-shirt

Wear a ‘Climb Now Work Later’ splash of inspiration on the back of your t-shirt with this strapline underneath our logo. The women’s tee features a slim fit.



› Men’s Pass T-shirt

This classic landscape tee is inspired by the location of our factory below Snowdon and next to Lake Padarn.



› Women’s Pass T-shirt

This classic landscape tee is inspired by the location of our hardware manufacturing base by the edge of Lake Padarn. The women’s Pass tee features an open neck and casual fit.



› Men’s Torque T-shirt

The Torque tee takes its cue from a piece of classic trad climbing hardware.



› Women’s Torque T-shirt

The Torque tee takes its cue from a piece of classic trad climbing hardware. The women’s Torque tee features an open neck and casual fit.



› Men’s Pick T-shirt

Look sharp with our classic fit, pick-scape tee. The print uses the iconic outline of DMM ice picks.



› Kids’ DMM T-shirt

A classic kid’s t-shirt featuring a twist on our logo with ‘Climb Now Homework Later’ beneath it on the back. Available for ages from 3 - 12 years.

DESCRIPTION	PRODUCT NAME	COLOUR	SIZE
Men's DMM T-shirt	SM2BL-S	Bright Blue	S
Men's DMM T-shirt	SM2BL-M	Bright Blue	M
Men's DMM T-shirt	SM2BL-L	Bright Blue	L
Men's DMM T-shirt	SM2BL-XL	Bright Blue	XL
Men's DMM T-shirt	SM2RD-S	Red	S
Men's DMM T-shirt	SM2RD-M	Red	M
Men's DMM T-shirt	SM2RD-L	Red	L
Men's DMM T-shirt	SM2RD-XL	Red	XL
Men's DMM T-shirt	SM2YL-S	Yellow	S
Men's DMM T-shirt	SM2YL-M	Yellow	M
Men's DMM T-shirt	SM2YL-L	Yellow	L
Men's DMM T-shirt	SM2YL-XL	Yellow	XL

DESCRIPTION	PRODUCT NAME	COLOUR	SIZE
Women's DMM T-shirt	SW2BL-S	Bright Blue	S
Women's DMM T-shirt	SW2BL-M	Bright Blue	M
Women's DMM T-shirt	SW2BL-L	Bright Blue	L
Women's DMM T-shirt	SW2BL-XL	Bright Blue	XL
Women's DMM T-shirt	SW2HP-S	Pink	S
Women's DMM T-shirt	SW2HP-M	Pink	M
Women's DMM T-shirt	SW2HP-L	Pink	L
Women's DMM T-shirt	SW2HP-XL	Pink	XL

DESCRIPTION	PRODUCT NAME	COLOUR	SIZE
Men's Pass T-shirt	SM2L2-S	Denim Blue/Blue	S
Men's Pass T-shirt	SM2L2-M	Denim Blue/Blue	M
Men's Pass T-shirt	SM2L2-L	Denim Blue/Blue	L
Men's Pass T-shirt	SM2L2-XL	Denim Blue/Blue	XL
Men's Pass T-shirt	SM2L1-S	Dark Red/White	S
Men's Pass T-shirt	SM2L1-M	Dark Red/White	M
Men's Pass T-shirt	SM2L1-L	Dark Red/White	L
Men's Pass T-shirt	SM2L1-XL	Dark Red/White	XL

DESCRIPTION	PRODUCT NAME	COLOUR	SIZE
Women's Pass T-shirt	SW2L4-S	Burgundy/White	S
Women's Pass T-shirt	SW2L4-M	Burgundy/White	M
Women's Pass T-shirt	SW2L4-L	Burgundy/White	L
Women's Pass T-shirt	SW2L4-XL	Burgundy/White	XL

DESCRIPTION	PRODUCT NAME	COLOUR	SIZE
Men's Torque T-shirt	SM2T1-S	Light Grey/Blue	S
Men's Torque T-shirt	SM2T1-M	Light Grey/Blue	M
Men's Torque T-shirt	SM2T1-L	Light Grey/Blue	L
Men's Torque T-shirt	SM2T1-XL	Light Grey/Blue	XL

DESCRIPTION	PRODUCT NAME	COLOUR	SIZE
Women's Torque T-shirt	SW2T1-S	Melange Grey/White	S
Women's Torque T-shirt	SW2T1-M	Melange Grey/White	M
Women's Torque T-shirt	SW2T1-L	Melange Grey/White	L
Women's Torque T-shirt	SW2T1-XL	Melange Grey/White	XL

DESCRIPTION	PRODUCT NAME	COLOUR	SIZE
Men's Pick T-shirt	SM2P1-S	Dark Green/White	S
Men's Pick T-shirt	SM2P1-M	Dark Green/White	M
Men's Pick T-shirt	SM2P1-L	Dark Green/White	L
Men's Pick T-shirt	SM2P1-XL	Dark Green/White	XL

DESCRIPTION	PRODUCT NAME	COLOUR	SIZE (YRS)
Kid's Homework T-Shirt	SK2BL3/4	Blue	3/4
Kid's Homework T-Shirt	SK2BL5/6	Blue	5/6
Kid's Homework T-Shirt	SK2BL7/8	Blue	7/8
Kid's Homework T-Shirt	SK2BL9/10	Blue	9/10
Kid's Homework T-Shirt	SK2BL11/12	Blue	11/12
Kid's Homework T-Shirt	SK2RD3/4	Red	3/4
Kid's Homework T-Shirt	SK2RD5/6	Red	5/6
Kid's Homework T-Shirt	SK2RD7/8	Red	7/8
Kid's Homework T-Shirt	SK2RD9/10	Red	9/10
Kid's Homework T-Shirt	SK2RD11/12	Red	11/12



Walls and Centres

› Kieran Forrest
2019 Welsh Climbing Championships,
Beacon Climbing Centre, Wales.
📷 Ray Wood

Stal Anchors



› Stal Anchor Updated

A truly independent and equalised stainless steel climbing wall anchor available in three configurations. Features low profile updated 'pucks'.

DESCRIPTION	PRODUCT CODE	STRENGTH	COLOUR
Stal Stainless Anchor	ST-SSTP	30kN	Black/Silver
Stal Stainless Bottom Rope Anchor	ST-SSTPMR	30kN	Black/Silver
Stal Stainless Lead Anchor	ST-SSTPAS	30kN	Black/Silver

Alpha Steel



› Alpha Steel

Forging the body of our ergonomic Alpha shape in steel creates the best handling gym draw on the market. The aluminium gate gives the same easy clipping experience as with our standard Alpha biners. Available with or without a captive bar.

MAJOR AXIS: 26kN

DESCRIPTION	PRODUCT CODE	COLOUR	DIMENSIONS	WEIGHT	MBS (MAJOR AXIS)	CONFORMANCE
Alpha Steel	C526	Black/Lime	62 x 107mm	134g	26kN	EN12275:2013 B
Alpha Steel Quickdraw 12cm	C526-12	Black	12cm	151g	26kN	EN12275:2013 B, EN566:2017
Alpha Steel/Maillon Quickdraw 12cm	C526-12MR	Silver/Black	12cm	288g	26kN	EN12275:2013 B, EN566:2017, EN12275:2013
Alpha Steel Quickdraw 18cm	C526-18	Black	18cm	156g	26kN	EN12275:2013 B, EN566:2017
Alpha Steel/Maillon Quickdraw 18cm	C526-18MR	Silver/Black	18cm	293g	26kN	EN12275:2013 B, EN566:2017, EN12275:2013

DESCRIPTION	PRODUCT CODE	COLOUR	DIMENSIONS	WEIGHT	MBS (MAJOR AXIS)	CONFORMANCE
Alpha Steel Captive Bar	C526CB	Black/Lime	62 x 107mm	135g	26kN	EN12275:2013 B
Alpha Steel Captive Bar Quickdraw 12cm	C526CB-12	Black	12cm	152g	26kN	EN12275:2013 B, EN566:2017
Alpha Steel Captive Bar/Maillon Quickdraw 12cm	C526CB-12MR	Silver/Black	12cm	289g	26kN	EN12275:2013 B, EN566:2017, EN12275:2013
Alpha Steel Captive Bar Quickdraw 18cm	C526CB-18	Black	18cm	157g	26kN	EN12275:2013 B, EN566:2017
Alpha Steel Captive Bar/Maillon Quickdraw 18cm	C526CB-18MR	Silver/Black	18cm	294g	26kN	EN12275:2013 B, EN566:2017, EN12275:2013

Harnesses



› Alpine

A robust centre specific harness with a wide range of fit and colour coded sizing. Now with integrated DMM iD as standard.



WEIGHT: 400 / 405 / 425g



› Alpine ABS

A robust centre specific harness with a wide sizing range, secure ABS buckles and colour coded sizing. Now with integrated DMM iD as standard.



WEIGHT: 400 / 405 / 425g



› Brenin

A centre specific webbing harness with a classic belay loop configuration and colour coded sizing. Now with integrated DMM iD as standard.



WEIGHT: 450 / 470g



› Chest Harness

A chest harness for increased security in situations where inversion is possible. Now with integrated DMM iD as standard.



WEIGHT: 310g



› Bridge Sling

A connecting component that joins a chest and sit harness. Now with integrated DMM iD as standard.



WEIGHT: 34 / 42g



› Alpine Accessories

Spare gear loops and leg loop restraining straps for the Alpine harness.

DESCRIPTION	PRODUCT CODE	COLOUR	SIZE	WEIGHT	WAIST (IN)	WAIST (CM)	LEGS (IN)	LEGS (CM)	CONFORMANCE
Alpine XS iD	ALPINEXS-ID	Black/Blue	XS	400g	16 - 35	40-90	12 - 28	30 - 70	EN12277:2015 C
Alpine Regular iD	ALPINE-ID	Black/Gold	Regular	405g	16 - 49	40 - 125	16 - 28	40 - 70	EN12277:2015 C
Alpine XL iD	ALPINEXL-ID	Black/Red	XL	425g	24 - 59	60 - 150	20 - 35	50 - 90	EN12277:2015 C

DESCRIPTION	PRODUCT CODE	COLOUR	SIZE	WEIGHT	WAIST (IN)	WAIST (CM)	LEGS (IN)	LEGS (CM)	CONFORMANCE
Alpine ABS XS iD	ALPINEABSXS-ID	Black/Blue	XS	400g	16 - 35	40-90	12 - 28	30 - 70	EN12277:2015 C
Alpine ABS Regular iD	ALPINEABS-ID	Black/Gold	Regular	405g	16 - 49	40 - 125	16 - 28	40 - 70	EN12277:2015 C
Alpine ABS XL iD	ALPINEABS-XL-ID	Black/Red	XL	425g	24 - 59	60 - 150	20 - 35	50 - 90	EN12277:2015 C

DESCRIPTION	PRODUCT CODE	COLOUR	SIZE	WEIGHT	WAIST (IN)	WAIST (CM)	LEGS (IN)	LEGS (CM)	CONFORMANCE
Brenin ABS Regular iD	BRENIN-ID	Black/Gold	Regular	450g	18-49	45-125	18-31	45-80	EN12277:2015 C
Brenin ABS XL iD	BRENINXL-ID	Black/Red	XL	470g	22 - 61	55 - 155	20 - 33	50 - 85	EN12277:2015 C

DESCRIPTION	PRODUCT CODE	COLOUR	SIZE	WEIGHT	WAIST (IN)	WAIST (CM)	LEGS (IN)	LEGS (CM)	CONFORMANCE
Chest Harness iD	CHESTH-ID	Black	One size	310g	30 - 45	75 - 115	ONA	ONA	EN12277:2015 D

DESCRIPTION	PRODUCT CODE	COLOUR	SIZE	WEIGHT (G)	CONFORMANCE
Bridge Sling Black 15cm iD	MA16LN-15-ID	Black	15cm	34	EN566:2017
Bridge Sling Black 20cm iD	MA16LN-20-ID	Black	20cm	42	EN566:2017

DESCRIPTION	PRODUCT CODE	COLOUR	SIZE
Alpine Gear Loop Black	GLALPINE	Black	One size
Alpine Restraining Straps Black	RSALPINE	Black	One size

Helmets

New



› Coron Helmet

The Coron has an ABS Shell with EPS Liner developed with intensive use in mind. It has click wheel adjustment and centre replaceable components.



SIZE RANGE: 54-62CM
WEIGHT: 365G

DESCRIPTION	PRODUCT CODE	COLOUR	SIZE	WEIGHT (G)	SIZE	CONFORMANCE
Coron Helmet Red iD	HELMC-R-ID	Red	One size	365	54-62cm	EN12492:2012
Coron Helmet White iD	HELMC-W-ID	White	One size	365	54-62cm	EN12492:2012

Shoes



› Gym Shoes

A durable and comfortable climbing shoe designed for the wall environment.

DESCRIPTION	PRODUCT CODE	COLOUR	SIZE
Gym Shoes	RBOOT-GYM3	Red/Grey/Black	UK 3
	RBOOT-GYM4	Red/Grey/Black	UK 4
	RBOOT-GYM5	Red/Grey/Black	UK 5
	RBOOT-GYM6	Red/Grey/Black	UK 6
	RBOOT-GYM7	Red/Grey/Black	UK 7
	RBOOT-GYM8	Red/Grey/Black	UK 8
	RBOOT-GYM9	Red/Grey/Black	UK 9
	RBOOT-GYM10	Red/Grey/Black	UK 10
	RBOOT-GYM11	Red/Grey/Black	UK 11
	RBOOT-GYM12	Red/Grey/Black	UK 12
	RBOOT-GYM13	Red/Grey/Black	UK 13

Dynamic Ropes



› Super Big Jim

A durable dynamic rope built for heavy duty use at climbing walls and outdoor centres.

DIAMETER: 10.5mm



› Statement

A tough, single rope that is suited for use at the wall. Now comes with tangle free 3D coil technology for easy uncoiling.

DIAMETER: 10.0mm

Low Stretch Ropes



› Worksafe

DMM Worksafe is a robust low stretch rope that is perfect for abseiling and top roping,.

DIAMETER: 11mm



› Worksafe Plus

Durable low stretch rope with excellent handling that is ideal for heavy duty use.

DIAMETER: 10.0 / 10.5 / 11mm



› Accessory Cord

Static accessory cords that are supple and robust.

DIAMETER: 2 / 3 / 4 / 5 / 6 / 7 / 8mm

DESCRIPTION	PRODUCT CODE	COLOUR	ROPE DIAMETER	WEIGHT (G/M)	LENGTH	CONFORMANCE
Super Big Jim	RP192BL-30	Midnight Blue	10.5m	70g/m	30m	EN892:2012 + A1 2016
Super Big Jim	RP192BL-40	Midnight Blue	10.5m	70g/m	40m	EN892:2012 + A1 2016
Super Big Jim	RP192BL-100	Midnight Blue	10.5m	70g/m	100m	EN892:2012 + A1 2016
Super Big Jim	RP192BL-200	Midnight Blue	10.5m	70g/m	200m	EN892:2012 + A1 2016
Super Big Jim	RP192BL-300	Midnight Blue	10.5m	70g/m	300m	EN892:2012 + A1 2016
Super Big Jim	RP192OR-30	Orange	10.5m	70g/m	30m	EN892:2012 + A1 2016
Super Big Jim	RP192OR-40	Orange	10.5m	70g/m	40m	EN892:2012 + A1 2016
Super Big Jim	RP192OR-100	Orange	10.5m	70g/m	100m	EN892:2012 + A1 2016
Super Big Jim	RP192OR-200	Orange	10.5m	70g/m	200m	EN892:2012 + A1 2016
Super Big Jim	RP192OR-300	Orange	10.5m	70g/m	300m	EN892:2012 + A1 2016

DESCRIPTION	PRODUCT CODE	COLOUR	ROPE DIAMETER	WEIGHT (G/M)	LENGTH	CONFORMANCE
Statement	RP102BL-30	Blue	10mm	65g/m	30m	EN892:2012 + A1 2016
Statement	RP102BL-40	Blue	10mm	65g/m	40m	EN892:2012 + A1 2016
Statement	RP102BL-50	Blue	10mm	65g/m	50m	EN892:2012 + A1 2016
Statement	RP102BL-60	Blue	10mm	65g/m	60m	EN892:2012 + A1 2016
Statement	RP102BL-100	Blue	10mm	65g/m	100m	EN892:2012 + A1 2016
Statement	RP102BL-300	Blue	10mm	65g/m	300m	EN892:2012 + A1 2016
Statement	RP102CO-30	Copper	10mm	65g/m	30m	EN892:2012 + A1 2016
Statement	RP102CO-40	Copper	10mm	65g/m	40m	EN892:2012 + A1 2016
Statement	RP102CO-50	Copper	10mm	65g/m	50m	EN892:2012 + A1 2016
Statement	RP102CO-60	Copper	10mm	65g/m	60m	EN892:2012 + A1 2016
Statement	RP102CO-100	Copper	10mm	65g/m	100m	EN892:2012 + A1 2016
Statement	RP102CO-300	Copper	10mm	65g/m	300m	EN892:2012 + A1 2016

DESCRIPTION	PRODUCT CODE	COLOUR	ROPE DIAMETER	WEIGHT (G/M)	LENGTH	CONFORMANCE
Worksafe	RP901WI-100	White/Blue/Grey	11mm	75g/m	100m	EN1891:1998 A
Worksafe	RP901WI-200	White/Blue/Grey	11mm	75g/m	200m	EN1891:1998 A
Worksafe	RP901WI-700	White/Blue/Grey	11mm	75g/m	700m	EN1891:1998 A
Worksafe	RP901BK-100	Black	11mm	75g/m	100m	EN1891:1998 A
Worksafe	RP901BK-200	Black	11mm	75g/m	200m	EN1891:1998 A
Worksafe	RP901BK-700	Black	11mm	75g/m	700m	EN1891:1998 A

DESCRIPTION	PRODUCT CODE	COLOUR	ROPE DIAMETER	WEIGHT (G/M)	LENGTH	CONFORMANCE
Worksafe Plus	RP911WI-100	White/Red/Grey	11mm	75g/m	100m	EN1891:1998 A
Worksafe Plus	RP911WI-200	White/Red/Grey	11mm	75g/m	200m	EN1891:1998 A
Worksafe Plus	RP911WI-700	White/Red/Grey	11mm	75g/m	700m	EN1891:1998 A
Worksafe Plus	RP915WI-100	White/Red/Grey	10.5mm	72g/m	100m	EN1891:1998 A
Worksafe Plus	RP915WI-200	White/Red/Grey	10.5mm	72g/m	200m	EN1891:1998 A
Worksafe Plus	RP915WI-700	White/Red/Grey	10.5mm	72g/m	700m	EN1891:1998 A
Worksafe Plus	RP910WI-100	White/Red/Grey	10mm	66g/m	100m	EN1891:1998 A
Worksafe Plus	RP910WI-200	White/Red/Grey	10mm	66g/m	200m	EN1891:1998 A
Worksafe Plus	RP910WI-700	White/Red/Grey	10mm	66g/m	700m	EN1891:1998 A

DESCRIPTION	PRODUCT CODE	COLOUR	ROPE DIAMETER	WEIGHT (G/M)	LENGTH	CONFORMANCE
Accessory Cord	RP002BL-100	Blue	2mm	21g/m	100m	N/A
Accessory Cord	RP003NA-100	Indigo	3mm	6g/m	100m	N/A
Accessory Cord	RP004PR-100	Violet	4mm	10g/m	100m	EN564:2014
Accessory Cord	RP005RD-100	Red	5mm	15g/m	100m	EN564:2014
Accessory Cord	RP006OR-100	Orange	6mm	25g/m	100m	EN564:2014
Accessory Cord	RP007YE-100	Yellow	7mm	32g/m	100m	EN564:2014
Accessory Cord	RP008GR-100	Green	8mm	41g/m	100m	EN564:2014

Rope Protection



› K-Pro Rope Protector

Heavy duty kevlar/canvas rope protector that can be attached to ropes. The ultimate in-line rope protection.



› ProPad+ Rope Protector

Heavy duty canvas/coir rope protector that can be attached to edges. Replaceable wear sheet adds longevity.

DESCRIPTION	PRODUCT CODE	COLOUR	LENGTH
K-Pro Canvas/Kevlar Rope Protector	K-PRO50	Blue/Red	50cm
K-Pro Canvas/Kevlar Rope Protector	K-PRO80	Blue/Red	80cm

DESCRIPTION	PRODUCT CODE	COLOUR
ProPad+ Edge Mat	PROPAD+	Blue/Red/Yellow
ProPad+ Wear Sheet	WEARSHEET	Yellow

Rigging Plate



› X-Small Bat Plate

Generous radii allow direct attachment of textiles as well as carabiners. The oversized hole allows for effortless centralising of anchors and gives a perfect clipping-in point. Ideal for big walls and complex rigging.

DESCRIPTION	MBS	WLL	DIMENSIONS	WEIGHT	CODE	CONFORMANCE
Bat Plate- XS	36kN	7kN	62 x 62 x 8mm	37g	NFPA 1983 (2012ED) G	RIG-XS-OR

DMM iD - Smart PPE

› PPE Inspection and management



Compatible with any
mobile device or
software



Compliments
any software



Built-in and retrofit RFID tags for PPE



Online access to product
info and EU DoC



Free management of DMM iD products in Papertrail

Retrofit iD Tags



DESCRIPTION	PRODUCT CODE	COLOUR	WATERPROOF	CONFORMANCE
iD Reader UHF	ID-READER	Black	IP68	UHF EPC Class 1 Gen 2 ISO 18000-6C
iD Dot Black 50 Pack & Glue	ID-DOT50-BLK	Black	IP68	UHF EPC Class 1 Gen 2 ISO 18000-6C
iD Dot Red 50 Pack & Glue	ID-DOT50-RED	Red	IP68	UHF EPC Class 1 Gen 2 ISO 18000-6C
iD Penloc Glue 1:1R 12ml Kit	ID-GLUE	-	IP68	UHF EPC Class 1 Gen 2 ISO 18000-6C
iD Zip Tie Black 50 Pack	ID-ZIPTIE50-BLK	Black	IP68	UHF EPC Class 1 Gen 2 ISO 18000-6C
iD Zip Tie Yellow 50 Pack	ID-ZIPTIE50-YELL	Yellow	IP68	UHF EPC Class 1 Gen 2 ISO 18000-6C
iD Rope Label with Heat Shrink 50 Pack	ID-ROPELABEL50	White	IP68	UHF EPC Class 1 Gen 2 ISO 18000-6C
iD Rope Label with Heat Shrink 100 Pack	ID-ROPELABEL100	White	IP68	UHF EPC Class 1 Gen 2 ISO 18000-6C
iD Helmet Sticker Black 50 Pack	ID-STICKER50	Black	IP68	UHF EPC Class 1 Gen 2 ISO 18000-6C

Customer Services

Our Customer Service team is here to help our distributors, retailers and end users with any queries relating to our products and service.

The team have a wide knowledge of production, retail, industry and recreational use of our products. We have completed PPE inspection courses to provide advice and inspect returned products. We pride ourselves by answering any enquiry quickly and concisely.

Our goal is to help you with any queries relating to product, sales, delivery, use, repair, service, inspection and warranty.

If you have any questions/queries about a DMM product or wish to talk to the Customer Services team please email us at cs@dmmwales.com or call +44 (0) 1286 872 222.

We take great pride in our products and strive to produce impeccable goods. However, if a product does not perform to your satisfaction please email cs@dmmwales.com with the following:

- A brief explanation
- Serial number of the product
- Date and place of purchase (with a copy of the receipt)
- Pictures of the product
- Your preferred email, address and telephone number.

We will reply with the appropriate course of action.

Regular inspection and servicing of your kit is essential as this will highlight any possible problems (see the product user instruction leaflet for more information). In the event of finding a fault, damage, or if you are unsure about a product you should stop using it immediately and contact us at cs@dmmwales.com.

Full details about inspection and maintenance of all DMM products are included in the user instructions supplied with every product, these can also be found on the relevant product pages on our website. We highly recommend that our customers read these instructions and adhere to the recommendations set out in them.

Returns

When goods are returned to us we will carry out a full investigation through our quality system and inform you of the outcome.

To return goods for inspection please see dmmclimbing.com/About/Returns-Servicing-Repairs or email us at returns@dmmwales.com for further instruction.

All returned cases are individually investigated and overseen by our group quality assurance manager. We work with our worldwide distributors and retailers to handle this process quickly and efficiently.

Servicing, Repairs and Re-slinging

We offer servicing for DMM Cams and will re-sling Torque Nuts if they pass a safety inspection.

Prior to sending them to us, we ask you to inspect and assess your gear in accordance to the supplied user instructions and inspection criteria. These are also available as PDF's on the product pages of our website. If you feel that your gear has more service to give, please go to dmmclimbing.com/About/Returns-Servicing-Repairs for further information.

NB. We endeavour to carry out this service ASAP but during busy times this may take up to four weeks. Please allow plenty of time for this service and plan well in advance of your next climbing trip.

All DMM Cams & Torque Nuts can now be re-slung in North America

We are very pleased to have a 'Partner in Climb' in the USA.

Mountain Tools in California will re-sling any DMM Cams or Torque Nuts. Their service page has the full details: mnttools.com/cat/rclimb/cams/mt_camresling.htm.

Mountain Tools offer a re-sling service only. They will not perform a safety inspection on the product. If you are in any doubt of the integrity of your DMM products you should stop using it immediately, ask a competent person to check them or contact us for advice at cs@dmmwales.com.

Our customer services team:

Bill Cannock
Group Quality Assurance Manager

Holly Lindop
Customer Services



On the tools in Llanberis.
Ray Wood

Quality

BS EN ISO 9001:2015 Quality Assurance Management System

The quality management system maintained by DMM is registered to BS EN ISO 9001:2015 quality management system requirements. The main aim of this system is reflected in our mission statement:

“Together each one of us will make a better, safer product for our customers”

Our system has evolved and continues to evolve as a result of nearly 30 years of development, investment and improvement to all of our activities. ‘Quality’ both actual and perceived is our number one objective, reflecting the fact that each and every day thousands of people around the world rely on DMM products to save their lives. Our system is audited and supervised by SGS (UK) Ltd and other independent third party auditors (e.g. customers and potential customers, trading standards and other regulatory bodies) at regular intervals to ensure continuing compliance to the requirements of BS EN ISO 9001:2015, and as part of our commitment to continuous improvement.

CE Marking and Product Conformance

The CE marking process is known as ‘type examination’ and is an important supplement to our quality management system. In line with the requirements of European Union Personal Protective Equipment [PPE] Directive/Regulation, all products designed and manufactured by DMM which are classified as PPE are independently type examined and tested to the relevant European Standard for Mountaineering and/or Industrial Fall Arrest. Only after meeting the requirements of the PPE Directive/Regulation and the relevant European standard are we allowed to place the “CE” mark on our products. [the “CE” mark] on our products. Type examination and CE marking is a legal requirement in Europe for all height safety PPE whether for industrial or leisure use.

BS EN ISO 9001:2015 compliance and CE marking/product conformance are monitored by CEN [Committee for European Normalisation] Notified Body SGS. It is also a legal requirement that we maintain our quality management system as part of the PPE Directive/Regulation ‘CE’ marking process.

In addition, many DMM products also conform to other non-European standards (for example ANSI and CAN/CSA for North American conformance). More information about these products can be found on our web site or by enquiring directly to our sales team.

3-Sigma Testing

This is our system for setting and monitoring the strength ratings as marked on our products, in-line with the minimum requirements of the relevant European and other standards, the ‘3 Sigma Testing’ method. DMM were the first company in our industry to use this Statistical Quality Control [SQC] technique. Using test data derived from samples tested to destruction at the design stage we can set the strength rating of the product. We then have a system of ongoing batch testing which monitors and ensures that the rated strength is maintained and actually exceeded.

Part of our philosophy at DMM is to continue to improve the breaking strength of our products in excess of the standards which may be required. We do this to lessen the chance of failure in situations and conditions which might not be reflected in the standard but which we know as climbers ourselves can cause product failure.

UIAA Safety Labels

The UIAA (Union of International Alpinists Associations) is a body which promotes the safety and interests of all parties involved in mountaineering and related activities worldwide. The UIAA publish standards for mountaineering equipment which supplement the requirements of the corresponding European standards mentioned above.

Investor in People

DMM were the first manufacturing company in Wales to be registered to the Investor in People [IIP] standard [July 1992] and in September 2016 we achieved the prestigious *Gold Award*. This standard is people orientated and its main objectives are: [a] to develop strategies to improve the performance of the organisation through its people; [b] to ensure that the organisation takes action in order to improve its performance through its people; and [c] to evaluate the impact of this investment in people on the performance of the organisation. IIP is more than just a training system. The IIP system is a key mechanism that helps us to target areas for improvement in all aspects of the business.

Responsible Manufacturing

DMM manufactures equipment used for climbing and working at height. Manufacturing these products has an effect on the environment. Conscious of this, we are taking positive steps towards reducing our impact whilst improving the quality of life and well-being of our employees.

What we are doing:

- DMM hardware is made in our factory here in Wales, UK. This allows us to keep our supply chains as short as possible and support the local economy.
- By manufacturing high quality, durable products, we maximise the product lifespan. With careful maintenance, some of our products can potentially last more than a lifetime.
- Our iD system extends the life span of equipment by tracking the life and use of individual products even after serial numbers have worn off.
- Recycling all waste metal from our production process.
- Processing the water used in the rumbling process creating filtered clean water that goes to the local waste water treatment plant to be made safe for household consumption.
- Our packaging is undergoing a redesign, changing over to more environmentally and sustainable materials.
- Using EarthPositive organic clothing in our range, and supporting carbon reduction and the Fair Wear Foundation.
- Offering cam reslinging and servicing to extend their life.
- Encouraging repurposing of your old equipment through our Instagram retired gear campaign.
- Making continual improvements to the working environments at DMM.
- DMM is an Investors in People Gold Award company.



A white line outline of the map of Wales is centered on a solid red background. The outline captures the main body of the island and its numerous coastal inlets and peninsulas.

MADE IN WALES

Manufacturing high-quality climbing equipment since 1981